

EPP-TH | Epoch TH Power Mill

Q max High Efficient	▽ Roughing	▽▽ Semi-Finishing	▽▽▽ Finishing	HRC 69	No. of Teeth 4
--------------------------------	----------------------	-----------------------------	-------------------------	------------------	--------------------------



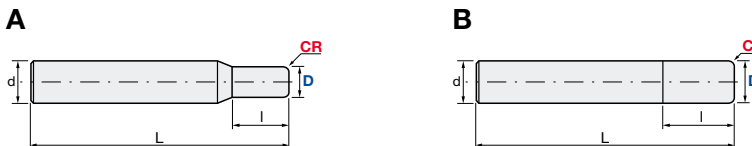
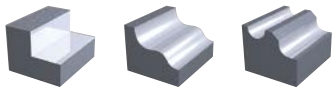
Carbide Micro Grain	TH45+ Nano-PVD Coating	Rake Angle neutral
-------------------------------	----------------------------------	------------------------------



Helix Angle	D Tol. [mm]	d Tol.
43°	D3~D6: 0/-0.015 D8~D12: 0/-0.02	h6

ID Code	Item Code	Z	D	l	L	d	Type
EP001	EPP-4030-TH	4	3	8	60	6	A
EP002	EPP-4040-TH		4	11			
EP266	EPP-4050-TH		5	13			
EP564	EPP-4060-TH		6	13			
EP581	EPP-4080-TH		8	19	75	8	B
EP656	EPP-4100-TH		10	22	80		
EP657	EPP-4120-TH		12	26	100		

Q max High Efficient	▽ Roughing	▽▽ Semi-Finishing	▽▽▽ Finishing	HRC 69	No. of Teeth 4
--------------------------------	----------------------	-----------------------------	-------------------------	------------------	--------------------------



Carbide Micro Grain	TH45+ Nano-PVD Coating	Rake Angle neutral
-------------------------------	----------------------------------	------------------------------



Helix Angle	D Tol. [mm]	d Tol.
43°	D3~D6: 0/-0.015 D8~D12: 0/-0.02	h6

ID Code	Item Code	Z	D	CR	l	L	d	Type
EP658	EPP-4030-02-TH	4	3	0.2	8	60	6	A
EP659	EPP-4030-05-TH			0.5				
EP660	EPP-4040-02-TH		4	0.2	11			
EP661	EPP-4040-05-TH			0.5				
EP662	EPP-4050-02-TH		5	0.2	13	75	8	B
EP663	EPP-4050-05-TH			0.5				
EP664	EPP-4060-03-TH		6	0.3	19			
EP665	EPP-4060-05-TH			0.5				
EP666	EPP-4060-10-TH		8	1.0	22	80	10	
EP667	EPP-4080-03-TH			0.3				
EP668	EPP-4080-05-TH		10	0.5	26			
EP669	EPP-4080-10-TH			1.0				
EP670	EPP-4100-05-TH	12	0.5	100	12			
EP671	EPP-4100-10-TH		1.0					
EP672	EPP-4100-20-TH		2.0					
EP673	EPP-4120-05-TH		0.5					
EP674	EPP-4120-10-TH		1.0					
EP675	EPP-4120-20-TH		2.0					

Cutting Conditions | Schnittwerte | Condizioni di taglio | Condiciones de Corte | Conditions de coupe | Valores de corte: