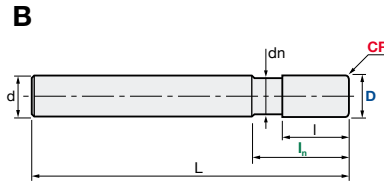
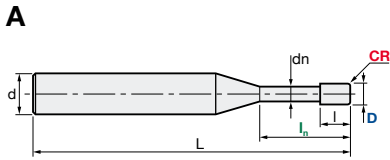




EPPP-TH | Epoch TH Power Mill Precision

Q max High Efficient	▽ Roughing	▽▽ Semi-Finishing	▽▽▽ Finishing	HRC 69	No. of Teeth 4
--------------------------------	----------------------	-----------------------------	-------------------------	------------------	--------------------------



Carbide Micro Grain	TH45+ Nano-PVD Coating	Rake Angle Neutral
-------------------------------	----------------------------------	------------------------------



Helix Angle	R Tol. [mm]	D Tol. [mm]	d Tol.
43°	+/-0.005	0/-0.01	h4

ID Code	Item Code	Z	D	CR	l _n	l	dn	L	d	Type
EP761	EPPP-4010-005-TH	4	1	0.05	2.5	1.5	0.95	50	6	A
EP762	EPPP-4015-005-TH		1.5		3.8	2.3	1.43			
EP763	EPPP-4020-005-TH		2		5.0	3.0	1.90			
EP764	EPPP-4025-005-TH		2.5		6.3	3.8	2.38			
EP765	EPPP-4030-005-TH		3	7.5	4.5	2.85				
EP766	EPPP-4040-01-TH		4	10.0	6.0	3.80				
EP767	EPPP-4050-01-TH		5	12.5	7.5	4.75				
EP768	EPPP-4060-01-TH		6	15.0	9.0	5.70	B			

EPPP-TH | Special Core Geometry

Larger Core diameter than conventional end mill:

Conventional	Comparison	EPPP: Core diameter 68% of D
<p>60% D</p>	<p>100% D</p>	<p>68% D</p>
<p>High deflection rate</p>	<p>Comparison of surface deflection</p>	<p>Low deflection rate:</p> <ul style="list-style-type: none"> + Higher surface quality + More tool life + Closer CR tolerance <p>= EPPP-TH</p>