



Maschinenspezifische Spannlösungen
Machine specific workholding solutions

swiss 
MODULAR[®]



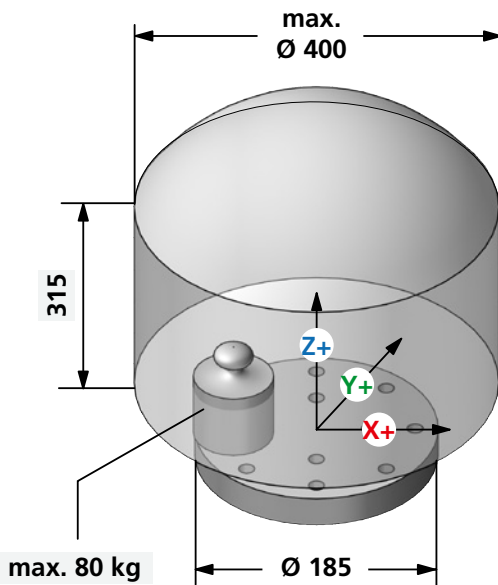
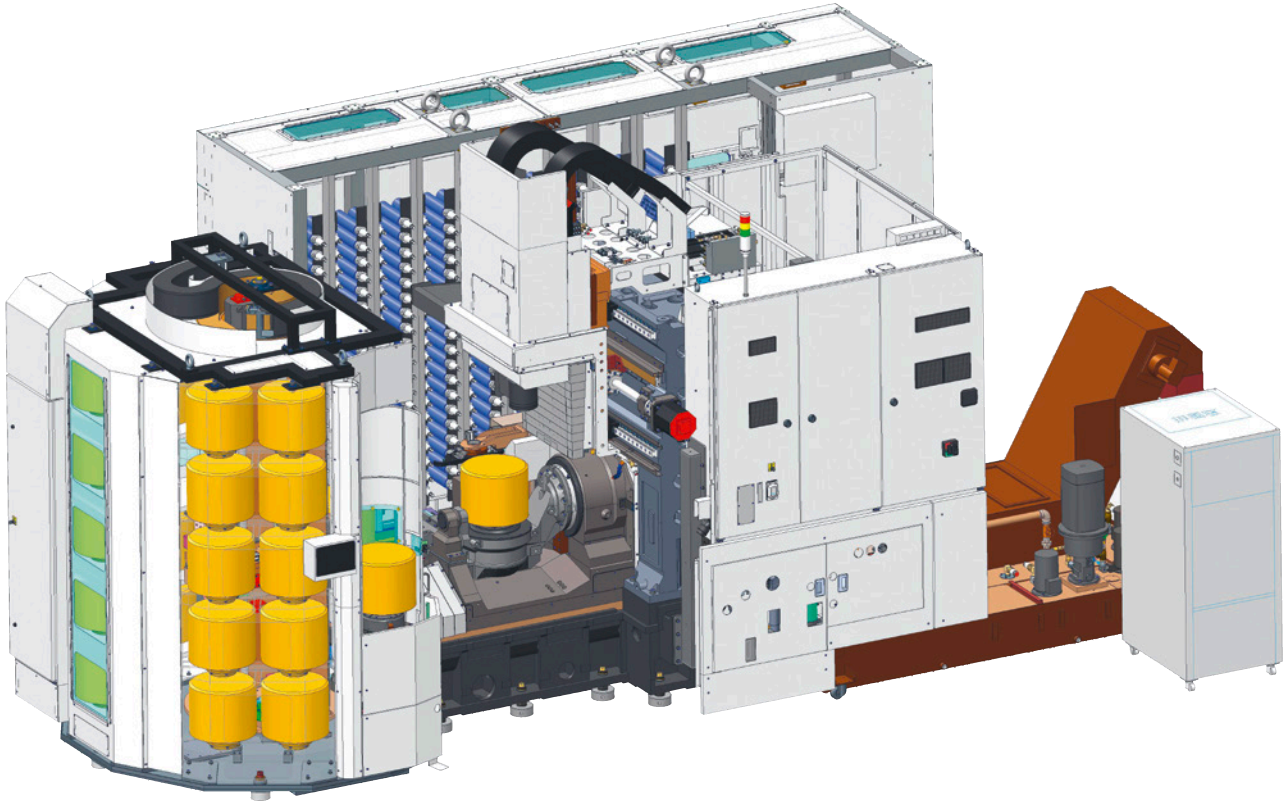
YASDA
PX30i



33 Paletten
33 pallets

323 Werkzeughalter-Plätze
323 Tool holder slots

Photo(s): YASDA PRECISION TOOLS K.K.



X = 680 (X-340 X+340)

Y = 400 (Y-200 Y+200)

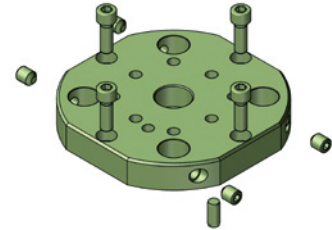
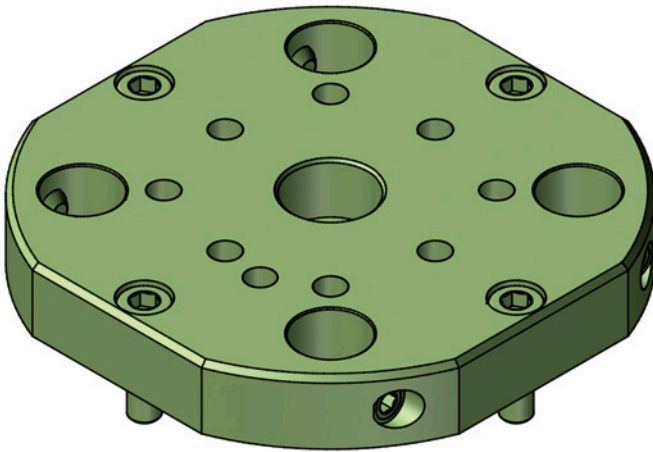
Z = 500



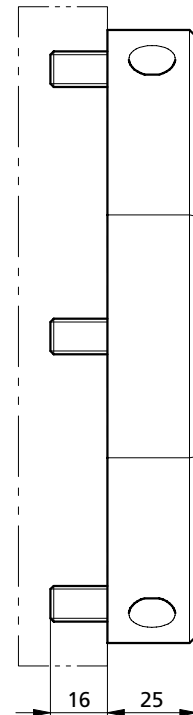
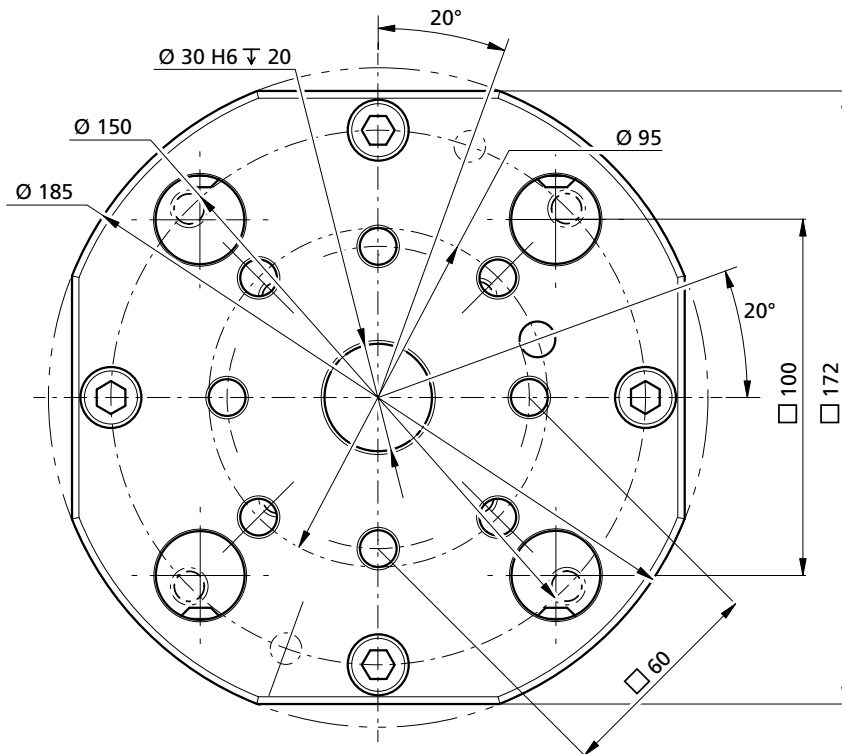
oppSYSTEM



Adapterflansch für «System 3R» Palette Ø 185
Adapter flange for «System 3R» pallet Ø 185

swiss 
MODULAR[®]



YAPX30I-AF1

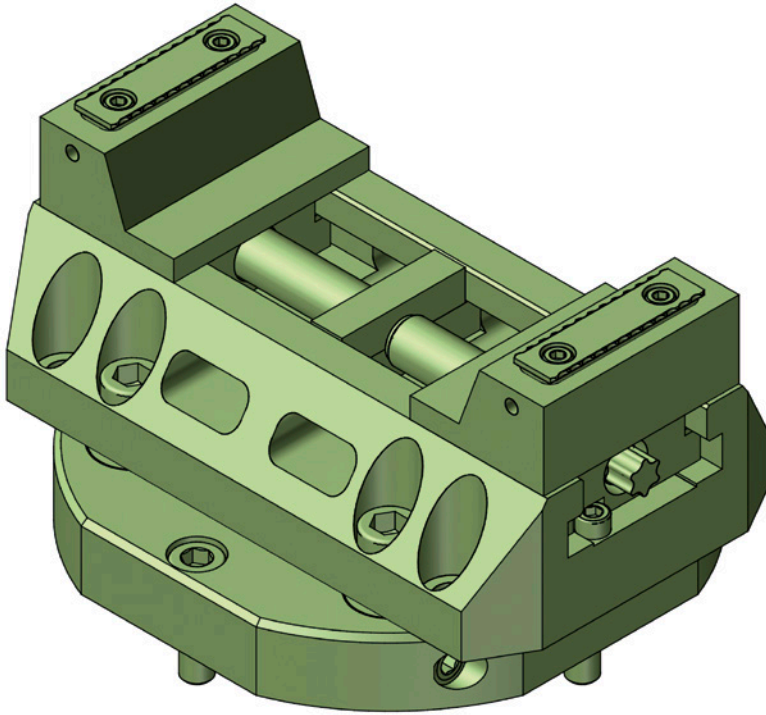


 Artikel Nr. und Inhalt <i>Article Nr. and content</i>	Bezeichnung <i>Description</i>	~ Kg
 YAPX30I-AF1	Adapterflansch / Adapter flange	4,4

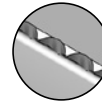


triCENTRO

Zentrischspanner «ZSX» schmal inkl. Adapterflansch
 Self centering vise «ZSX» slim incl. adapter flange



Backenvarianten verfügbar
 Jaw variants available

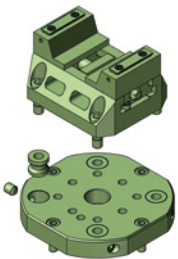


3mm Direkt-Prägebacken
 3mm Direct stamping jaws

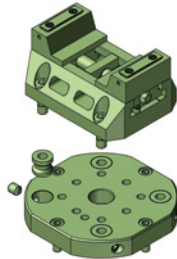


Spannkrafterhaltung
 mit Nachfederung
 Spring loaded mechanism
 to maintain clamping force

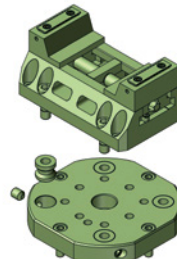
Bestellschlüssel Order code	Bezeichnung Description	~ Kg	Länge L Length L	Spannbereich A Clamping area A	Spannbereich B Clamping area B
YAPX30I-SET1	Maschinenset 1 / Machine set 1	10,8	140	10 - 64	62 - 118
YAPX30I-SET2	Maschinenset 2 / Machine set 2	11,4	160	10 - 84	62 - 138
YAPX30I-SET3	Maschinenset 3 / Machine set 3	11,9	180	10 - 104	62 - 158
YAPX30I-SET4	Maschinenset 4 / Machine set 4	12,5	200	10 - 124	62 - 178



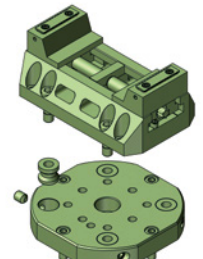
YAPX30I-SET1



YAPX30I-SET2



YAPX30I-SET3

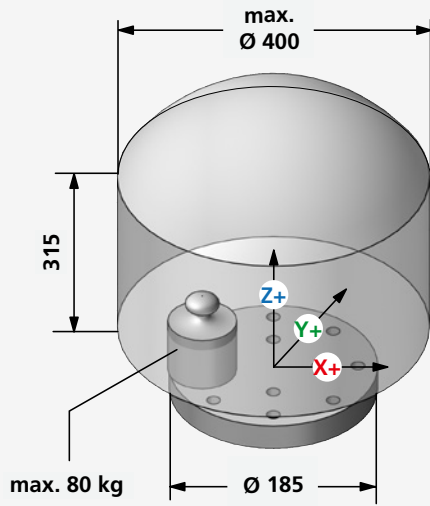
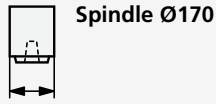


YAPX30I-SET4

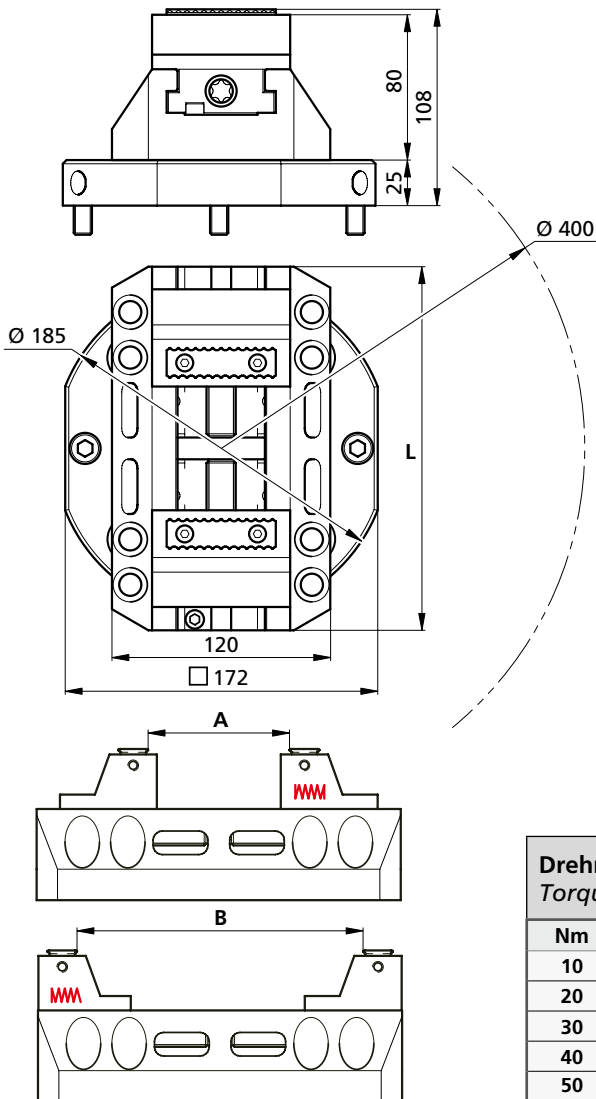




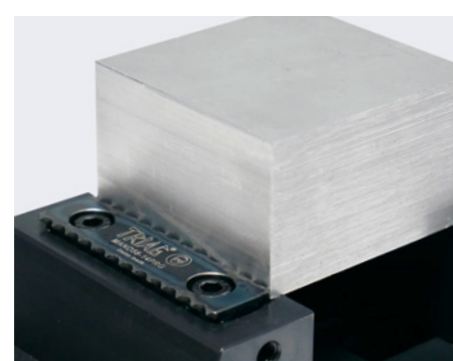
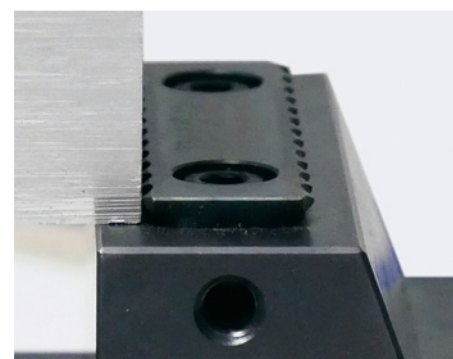
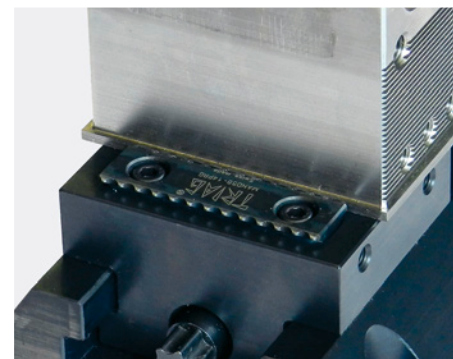
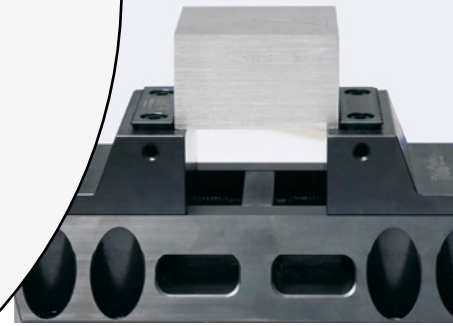
PX30i



X = 680 (X-340 X+340)
 Y = 400 (Y-200 Y+200)
 Z = 500



Drehmoment Torque		Spannkraft Workholding force		
Nm	(lb-ft)	~daN	~(lb)	~t
10	7,4	= 200	440	0,2
20	14,8	= 500	1'102	0,5
30	22,2	= 1'000	2'204	1,0
40	29,6	= 1'300	2'866	1,3
50	37,0	= 1'600	3'527	1,6

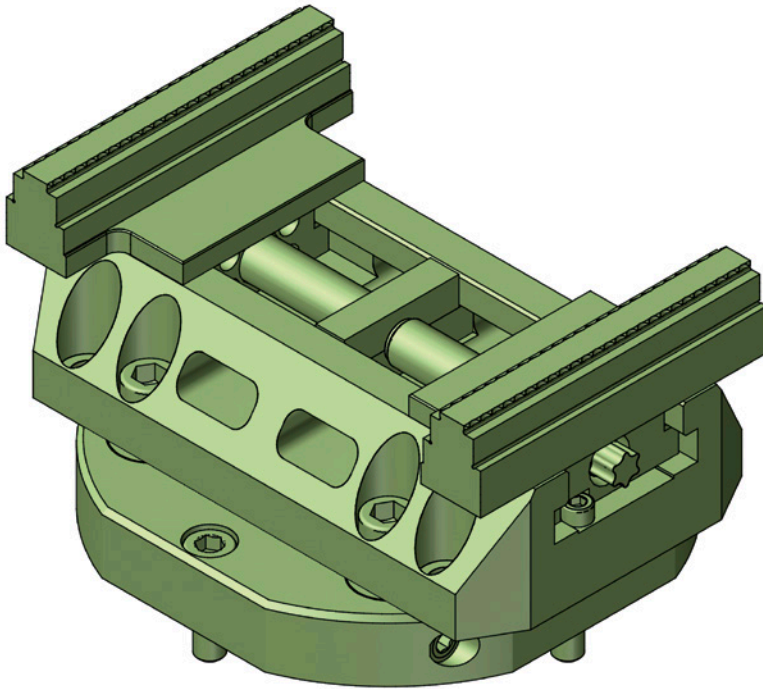




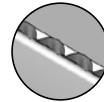
triCENTRO

Zentrischspanner «ZSX» breit inkl. Adapterflansch
Self centering vise «ZSX» wide incl. adapter flange

swiss 
MODULAR®



Backenvarianten verfügbar
Jaw variants available

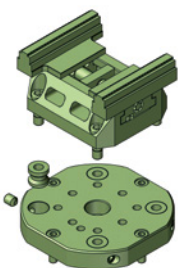


3mm Direkt-Prägebacken
3mm Direct stamping jaws

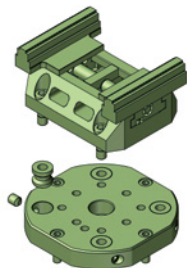


Spannkrafterhaltung
mit Nachfederung
Spring loaded mechanism
to maintain clamping force

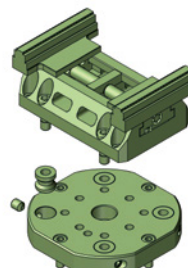
Bestellschlüssel Order code	Bezeichnung Description	~ Kg	Länge L Lenght L	Spannbereich A Clamping area A	Spannbereich B Clamping area B
 YAPX30I-SET5	Maschinenset 5 / Machine set 5	10,9	140	14 - 70	70 - 126
 YAPX30I-SET6	Maschinenset 6 / Machine set 6	11,5	160	14 - 90	70 - 146
 YAPX30I-SET7	Maschinenset 7 / Machine set 7	12,0	180	14 - 110	70 - 166
 YAPX30I-SET8	Maschinenset 8 / Machine set 8	12,6	200	14 - 130	70 - 186



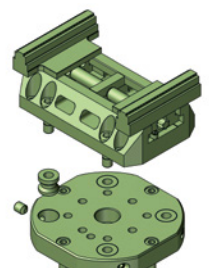
YAPX30I-SET5



YAPX30I-SET6



YAPX30I-SET7



YAPX30I-SET8

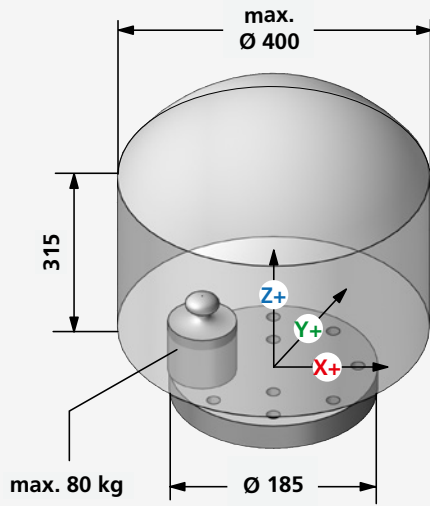


YASDA

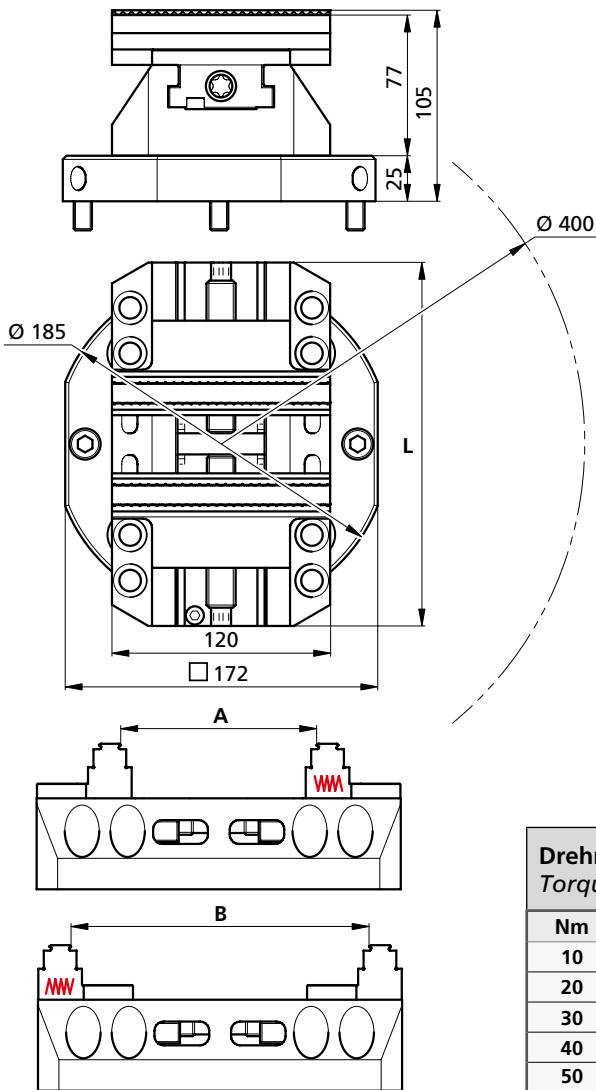
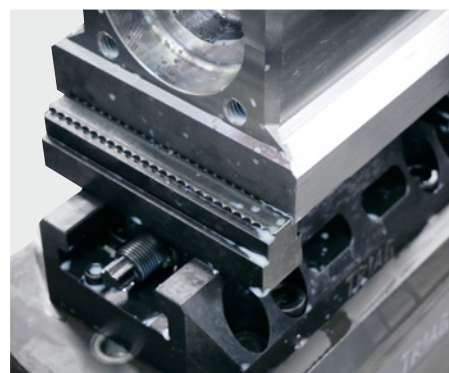
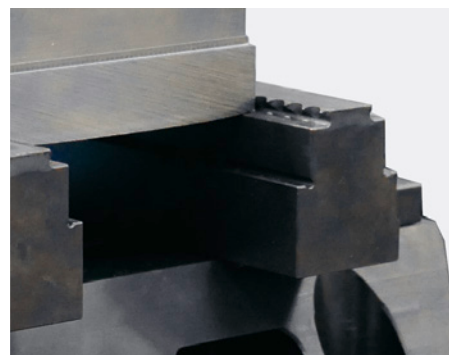
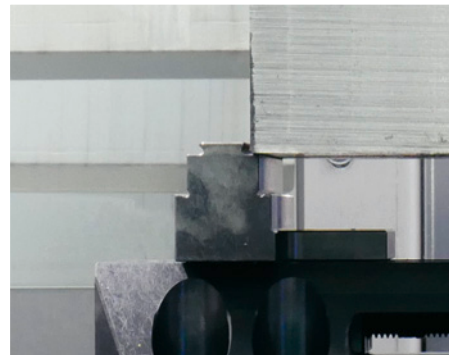
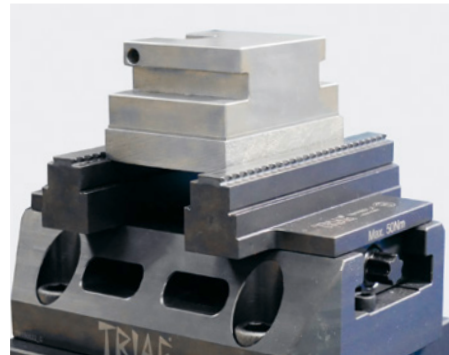
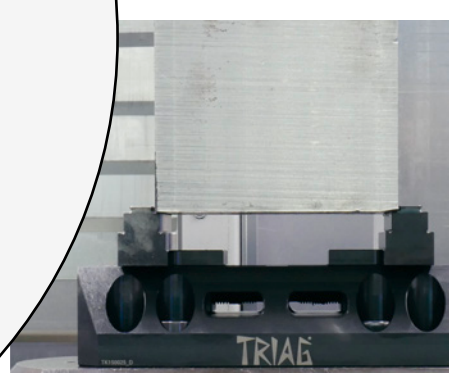
PX30i



Spindle Ø170



X = 680 (X-340 X+340)
 Y = 400 (Y-200 Y+200)
 Z = 500

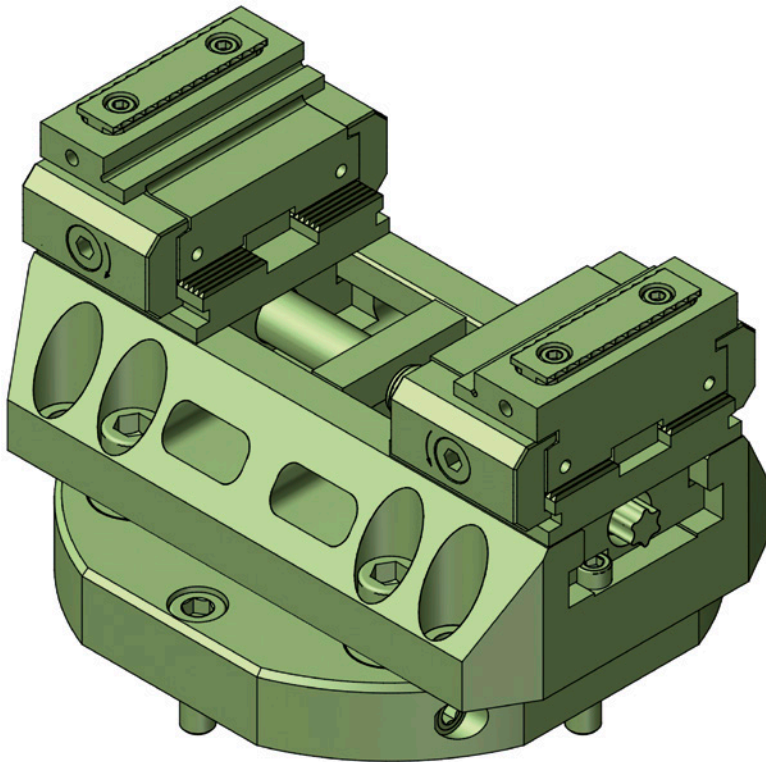


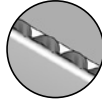

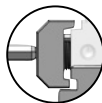
Drehmoment Torque		Spannkraft Workholding force		
Nm	(lb-ft)	~daN	~(lb)	~t
10	7,4	= 200	440	0,2
20	14,8	= 500	1'102	0,5
30	22,2	= 1'000	2'204	1,0
40	29,6	= 1'300	2'866	1,3
50	37,0	= 1'600	3'527	1,6



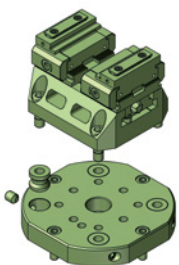
triCENTRO

Modularer Zentrischspanner «ZSM» inkl. Adapterflansch
Modular self centering vise «ZSM» incl. adapter flange

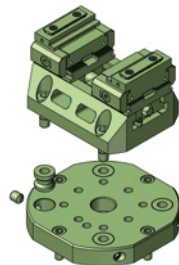


- 56** Verschiedene Anschlagmodule
Different stop modules
-  **3mm Direkt-Prägebacken**
3mm Direct stamping jaws
-  **powerCLAMP Schnittstelle**
powerCLAMP interface
-  **powerCLAMP Pratzensystem**
powerCLAMP side clamp system
- M** **Höchste Modularität**
Highest modularity

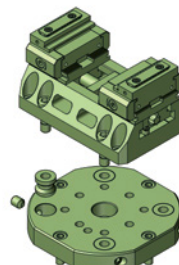
Bestellschlüssel <i>Order code</i>	Bezeichnung <i>Description</i>	~ Kg	Länge L <i>Length L</i>	Spannbereich A <i>Clamping area A</i>	Spannbereich B <i>Clamping area B</i>
 YAPX30I-SET9	Maschinenset 9 / <i>Machine set 9</i>	12,6	140	10 - 64	60 - 115
 YAPX30I-SET10	Maschinenset 10 / <i>Machine set 10</i>	13,2	160	10 - 84	60 - 135
 YAPX30I-SET11	Maschinenset 11 / <i>Machine set 11</i>	13,7	180	10 - 104	60 - 155
 YAPX30I-SET12	Maschinenset 12 / <i>Machine set 12</i>	14,3	200	10 - 124	60 - 175



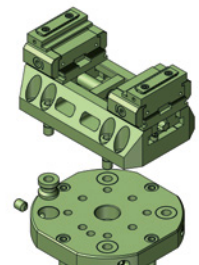
YAPX30I-SET9



YAPX30I-SET10



YAPX30I-SET11

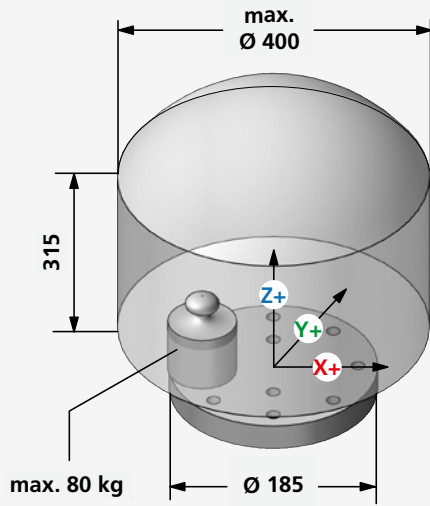


YAPX30I-SET12

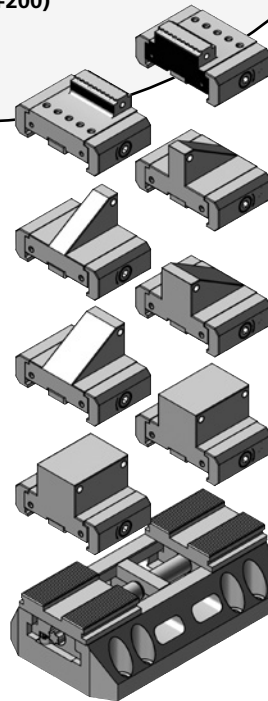
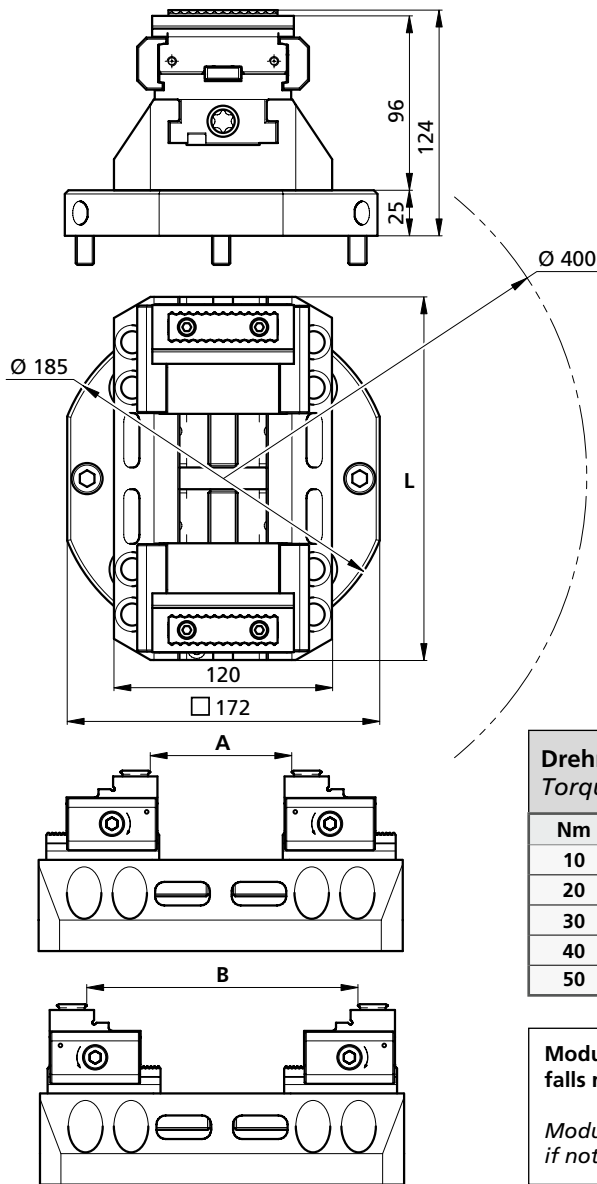




PX30i



X = 680 (X-340 X+340)
 Y = 400 (Y-200 Y+200)
 Z = 500

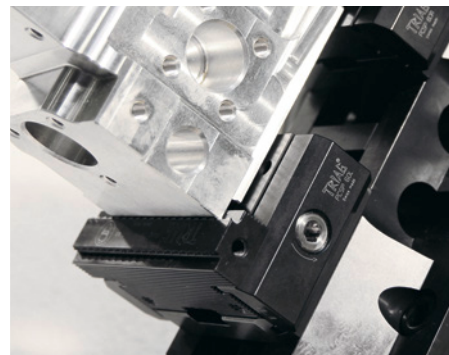
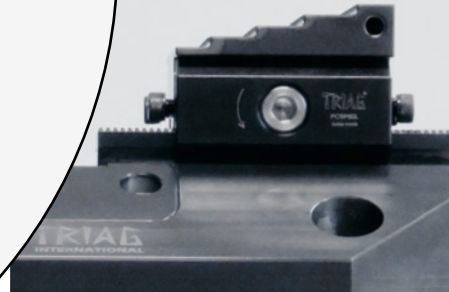


Mehr auf Seite 26
 More on page 26

Drehmoment Torque		Spannkraft Workholding force		
Nm	(lb-ft)	~daN	~(lb)	~t
10	7,4	= 200	440	0,2
20	14,8	= 500	1'102	0,5
30	22,2	= 1'000	2'204	1,0
40	29,6	= 1'300	2'866	1,3
50	37,0	= 1'600	3'527	1,6

Module gemäss Zusammenstellzeichnung
 falls nicht anders vereinbart.

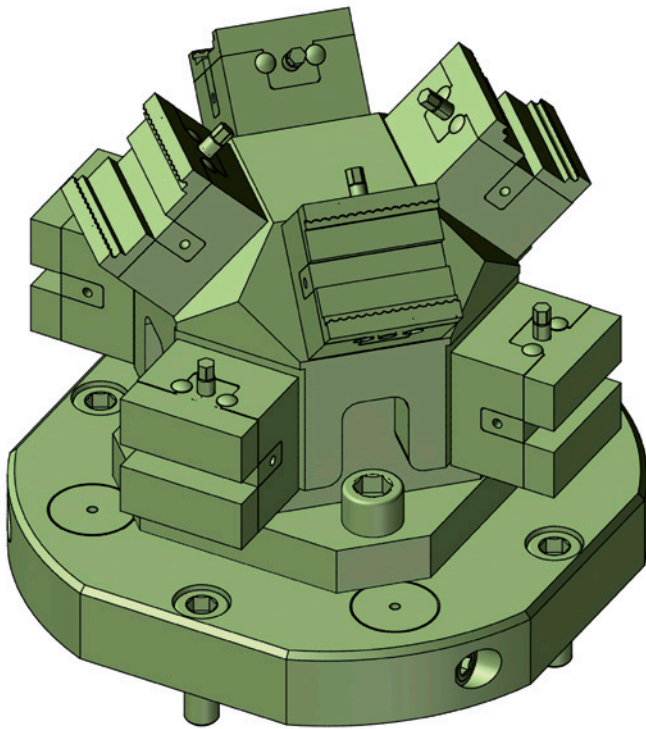
Modules according to assembly drawing
 if not agreed otherwise.



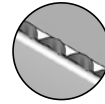


triCENTRO

Micro-Zentrischspanner inkl. Adapterflansch
 Micro self centering vises incl. adapter flange



7 Backenvarianten
 Jaw variants



2,2 mm Direkt-Prägebacken
 2,2 mm Direct stamping jaws



«Sputnik» 5-Achs
 Mehrfachspannsystem
 «Sputnik» 5-axis multiple
 workholding system

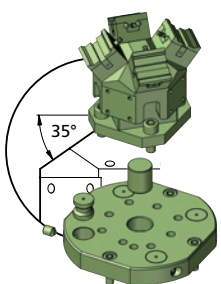


Verschiedene Bearbeitungswinkel
 Different machine angles

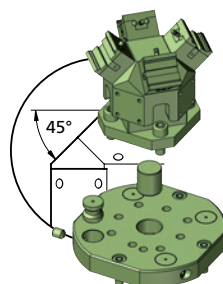


Beste Zugänglichkeit
 Best accessibility

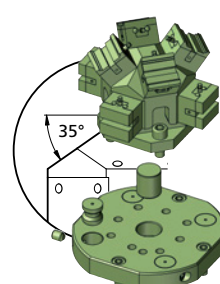
Bestellschlüssel Order code	Bezeichnung Description	~ Kg	Spannstellen Clamping areas	Winkel Angle	Spannbereich Clamping area
YAPX30I-SET13	Maschinenset 13 / Machine set 13	8,3	4	35°	0 - 31
YAPX30I-SET14	Maschinenset 14 / Machine set 14	8,4	4	45°	0 - 31
YAPX30I-SET15	Maschinenset 15 / Machine set 15	9,8	8	35°	0 - 31
YAPX30I-SET16	Maschinenset 16 / Machine set 16	9,9	8	45°	0 - 31



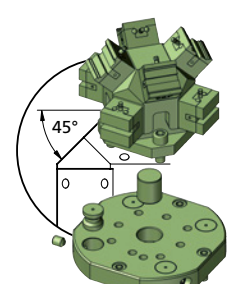
YAPX30I-SET13



YAPX30I-SET14



YAPX30I-SET15



YAPX30I-SET16

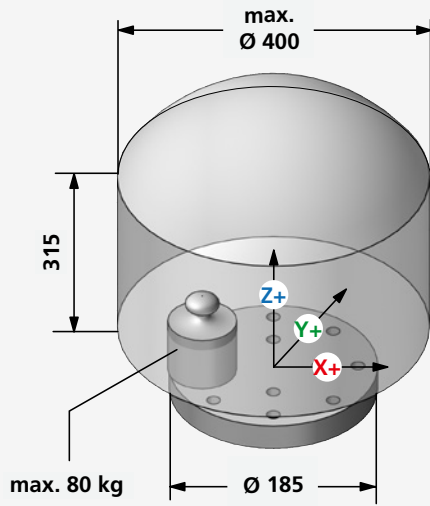




PX30i



Spindle Ø170

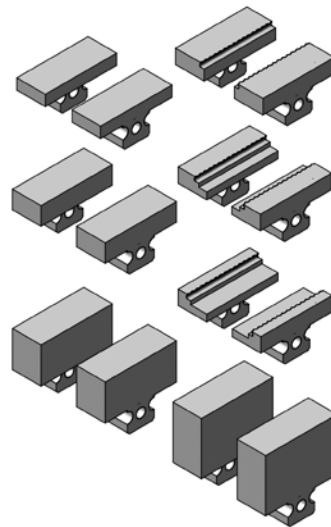
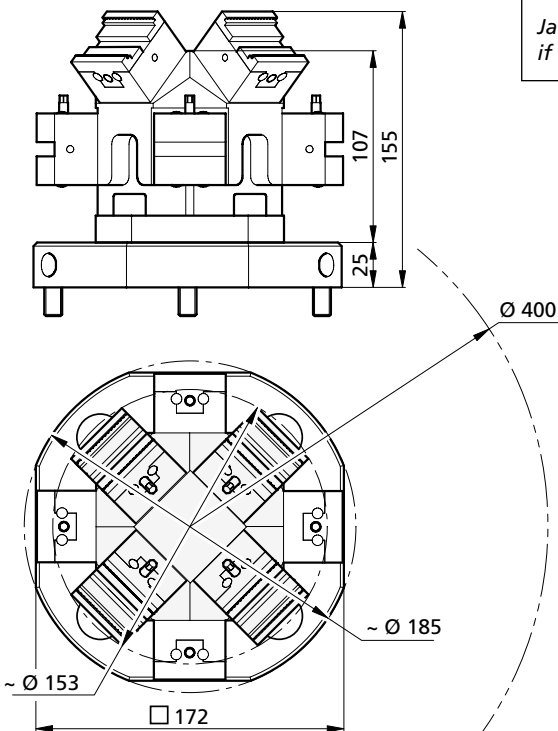


X = 680 (X-340 X+340)
 Y = 400 (Y-200 Y+200)
 Z = 500

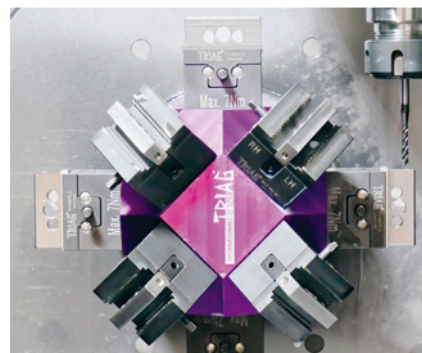
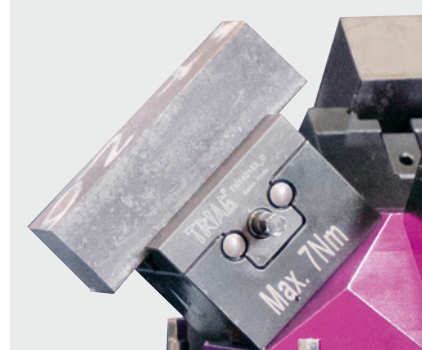
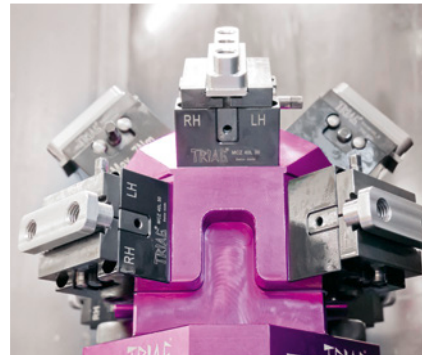
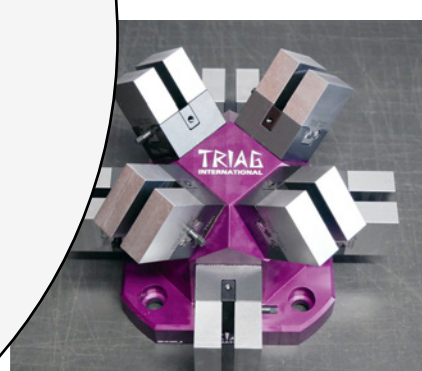
Drehmoment Torque		Spannkraft Workholding force		
Nm	(lb-ft)	~daN	~(lb)	~t
4	3	= 457	1'007	0,46
5	3,7	= 571	1'259	0,57
6	4,4	= 686	1'512	0,69
7	5,2	= 800	1'764	0,8

Backen gemäss Zusammenstellungszeichnung falls nicht anders vereinbart.

Jaws according to assembly drawing if not agreed otherwise.



Mehr auf Seite 27
 More on page 27

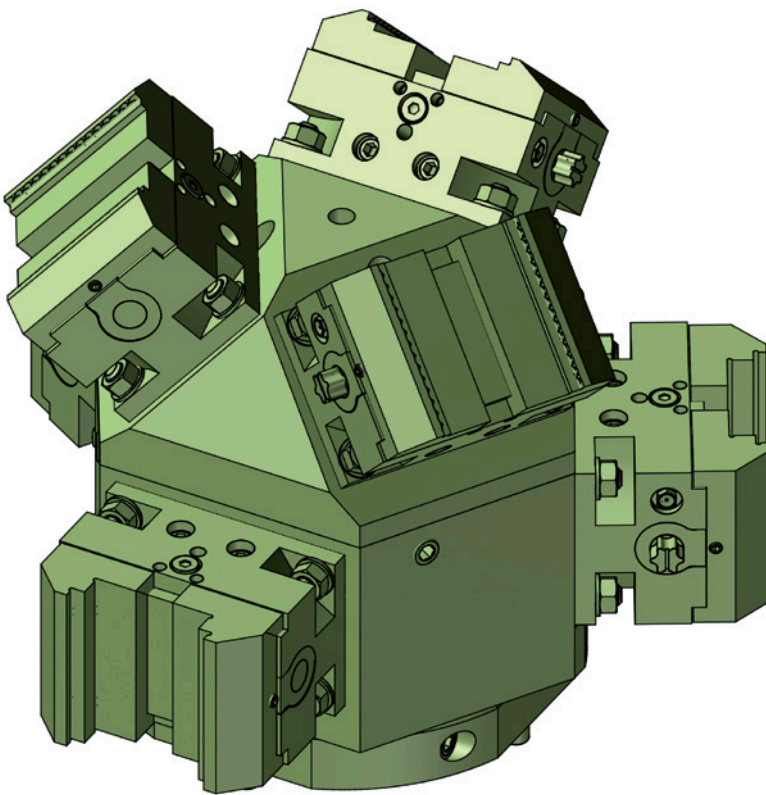




triCENTRO

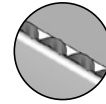
Mini-Zentrischspanner inkl. Adapterflansch
Mini self centering vises incl. adapter flange

swiss MADE IN 
MODULAR[®]

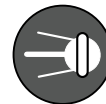


14

Backenvarianten
Jaw variants






3mm Direkt-Prägebacken
3mm Direct stamping jaws

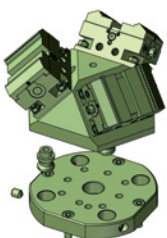


**«Sputnik» 5-Achs
Mehrfachspannsystem**
«Sputnik» 5-axis multiple
workholding system

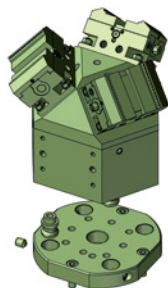


Beste Zugänglichkeit
Best accessibility

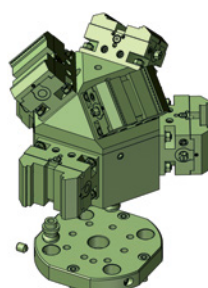
Bestellschlüssel Order code	Bezeichnung Description	~ Kg	Spannstellen Clamping areas	Spannbereich Clamping area
 YAPX30I-SET17	Maschinenset 17 / Machine set 17	22,4	3	0 - 121
 YAPX30I-SET18	Maschinenset 18 / Machine set 18	38,6	3	0 - 121
 YAPX30I-SET19	Maschinenset 19 / Machine set 19	48,5	6	0 - 121



YAPX30I-SET17



YAPX30I-SET18



YAPX30I-SET19



Drehmoment Torque		Spannkraft Workholding force		
Nm	(lb-ft)	~daN	~(lb)	~t
10	7,4	= 200	440	0,2
20	14,8	= 500	1'102	0,5
30	22,2	= 1'000	2'204	1,0
40	29,6	= 1'300	2'866	1,3
50	37,0	= 1'600	3'527	1,6

**Backen gemäss Zusammenstellzeichnung
falls nicht anders vereinbart.**

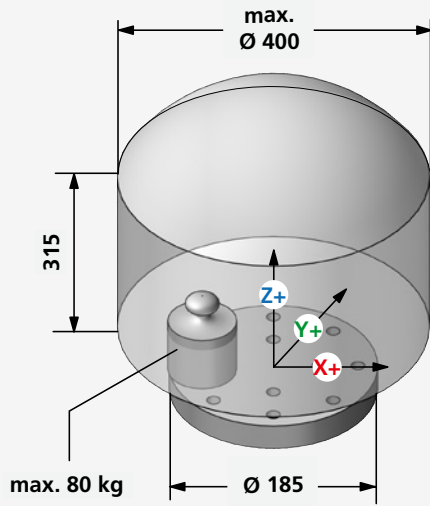
*Jaws according to assembly drawing
if not agreed otherwise.*

YASDA

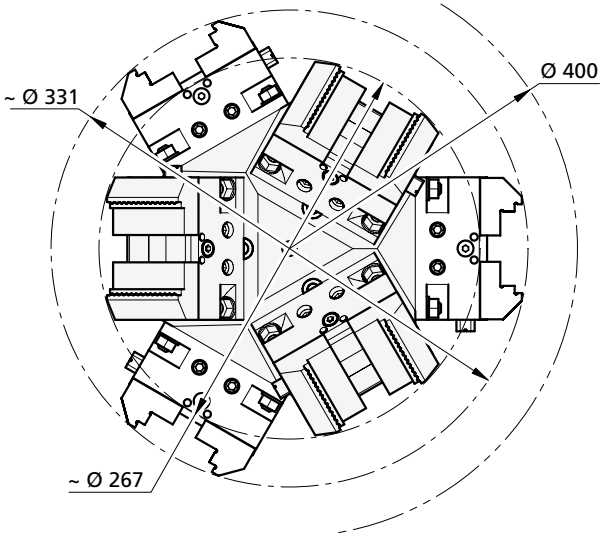
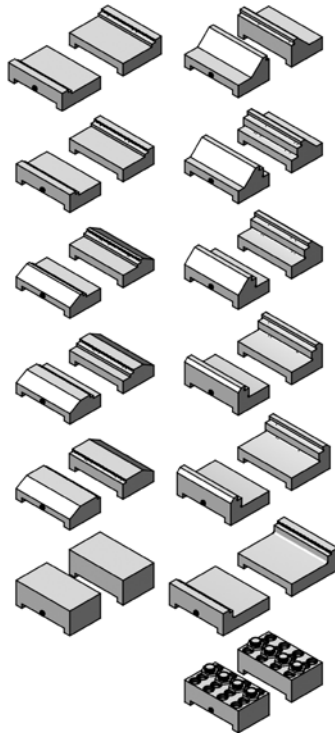
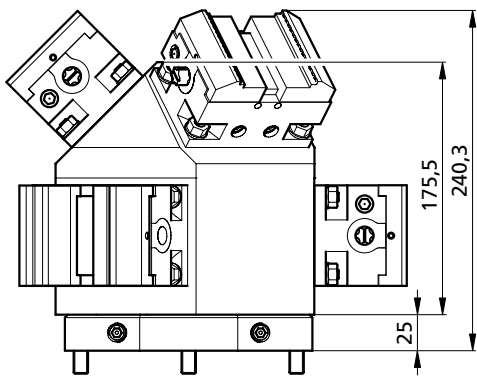
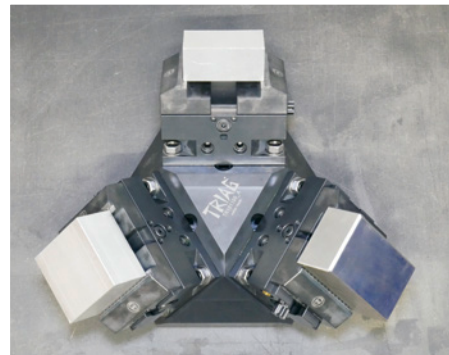
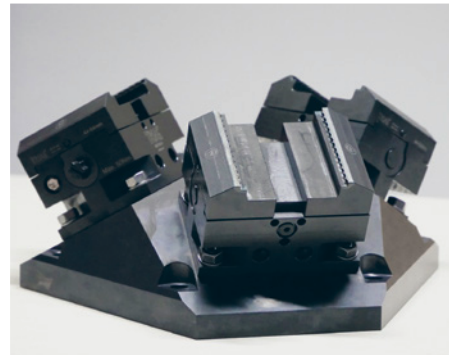
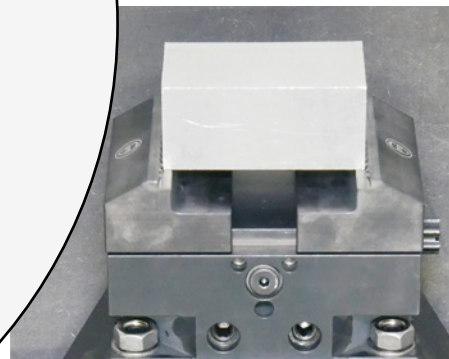
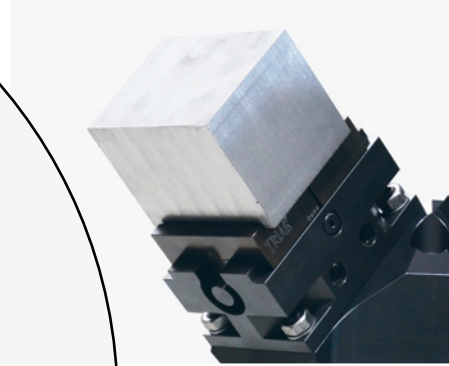
PX30i



Spindle Ø170



X = 680 (X-340 X+340)
Y = 400 (Y-200 Y+200)
Z = 500

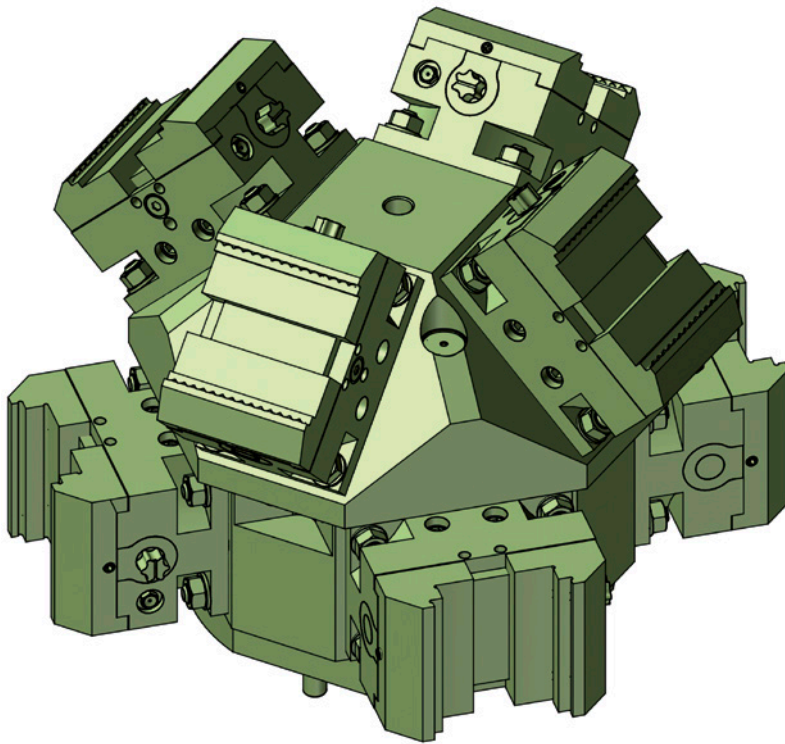


Mehr auf Seite 26
More on page 26



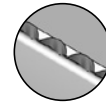
triCENTRO

Mini-Zentrischspanner inkl. Adapterflansch
Mini self centering vises incl. adapter flange



14

Backenvarianten
Jaw variants



3mm Direkt-Prägebacken
3mm Direct stamping jaws

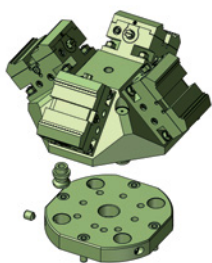


«Sputnik» 5-Achs
Mehrfachspannsystem
«Sputnik» 5-axis multiple
workholding system

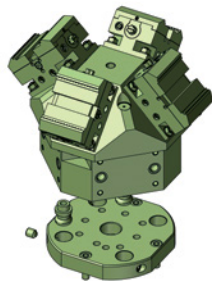


Beste Zugänglichkeit
Best accessibility

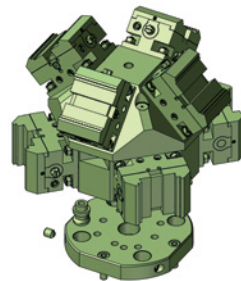
Bestellschlüssel Order code	Bezeichnung Description	~ Kg	Spannstellen Clamping areas	Spannbereich Clamping area
YAPX30I-SET20	Maschinenset 20 / Machine set 20	29,5	4	0 - 121
YAPX30I-SET21	Maschinenset 21 / Machine set 21	44,4	4	0 - 121
YAPX30I-SET22	Maschinenset 22 / Machine set 22	57,4	8	0 - 121



YAPX30I-SET20



YAPX30I-SET21



YAPX30I-SET22

Drehmoment Torque		Spannkraft Workholding force		
Nm	(lb-ft)	~daN	~(lb)	~t
10	7,4	= 200	440	0,2
20	14,8	= 500	1'102	0,5
30	22,2	= 1'000	2'204	1,0
40	29,6	= 1'300	2'866	1,3
50	37,0	= 1'600	3'527	1,6

Backen gemäss Zusammenstellzeichnung
falls nicht anders vereinbart.

Jaws according to assembly drawing
if not agreed otherwise.

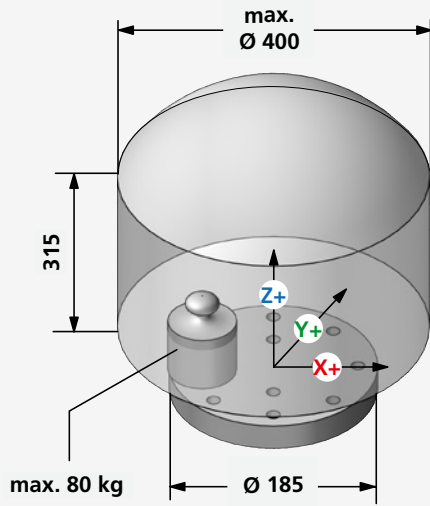


YASDA

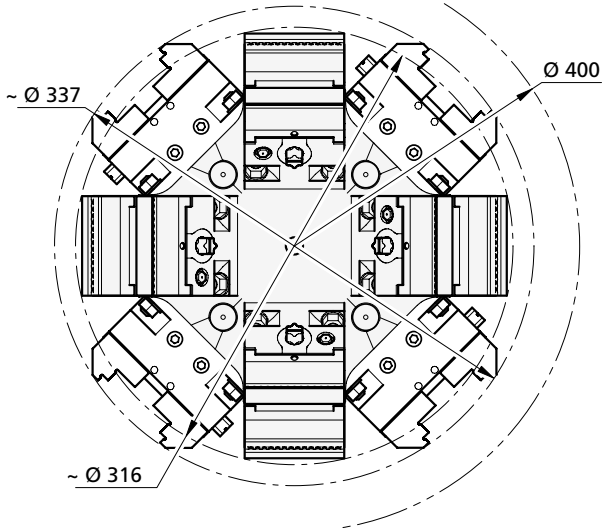
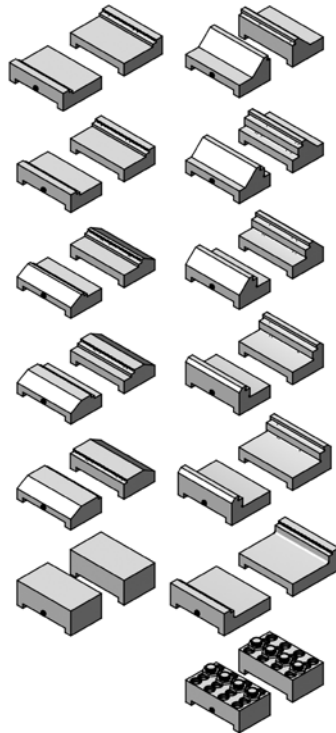
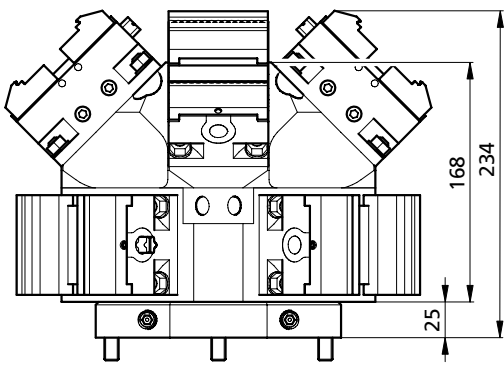
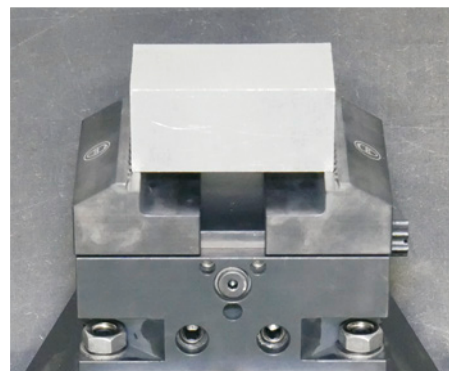
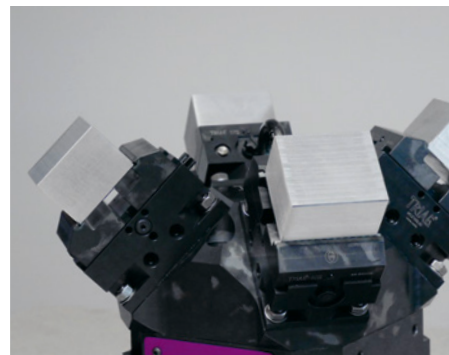
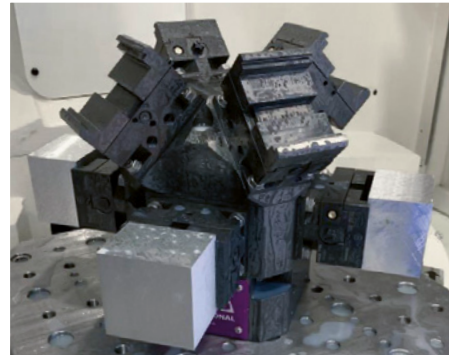
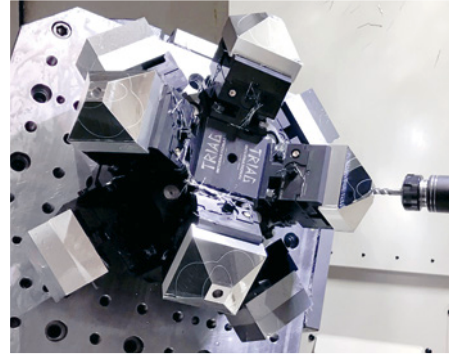
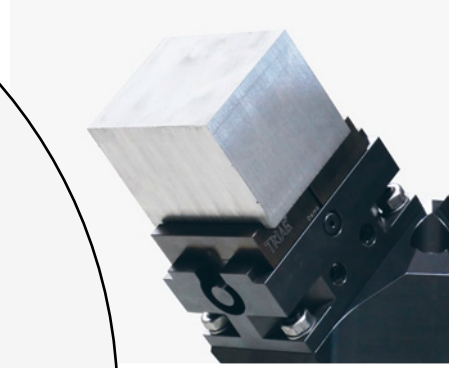
PX30i



Spindle Ø170



X = 680 (X-340 X+340)
 Y = 400 (Y-200 Y+200)
 Z = 500



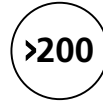
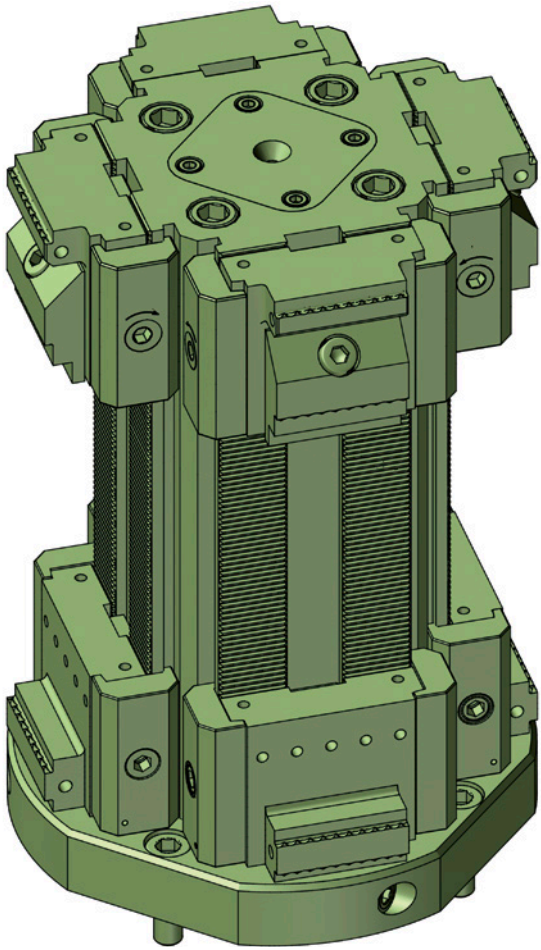
Mehr auf Seite 26
 More on page 26



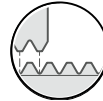
powerCLAMP

PCT Spannturm 4-seitig inkl. Adapterflansch
PCT 4-sided clamping tower incl. adapter flange

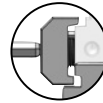
swiss 
MODULAR[®]



Verschiedene Module
Different Modules



powerCLAMP Schnittstelle
powerCLAMP interface



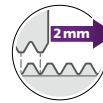
powerCLAMP Pratzensystem
powerCLAMP side clamp system




Höchste Modularität
Highest modularity

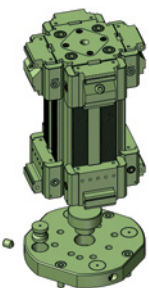


Keine spänefüllenden T-Nuten
No chip catching T-slots



Positionierschritte von 2 mm
Positioning increments of 2 mm

Bestellschlüssel <i>Order code</i>	Bezeichnung <i>Description</i>	~ Kg	Spannstellen <i>Clamping areas</i>	Spannbereich <i>Clamping area</i>
 YAPX30I-SET23	Maschinenset 23 / <i>Machine set 23</i>	31,4	4	max. 182



YAPX30I-SET23



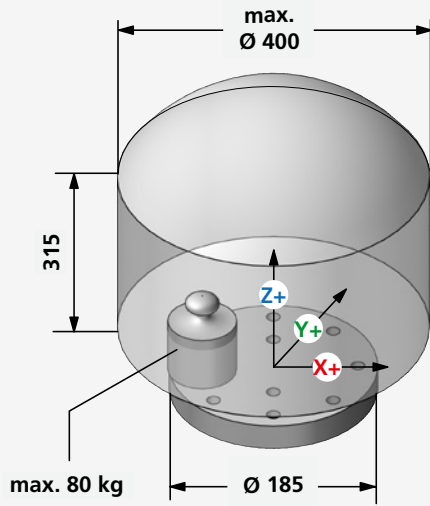
**Module gemäss Zusammenstellzeichnung
falls nicht anders vereinbart.**

*Modules according to assembly drawing
if not agreed otherwise.*

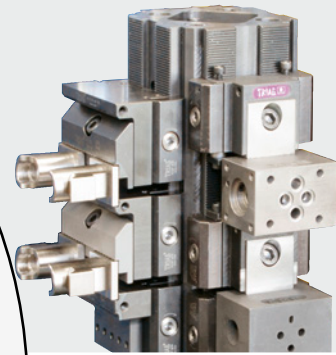
YASDA
PX30i



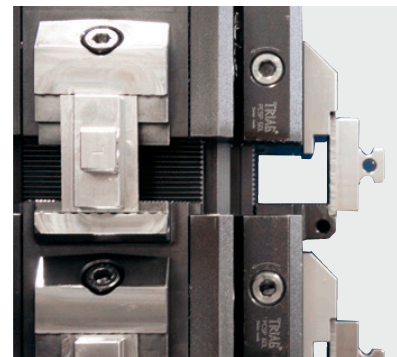
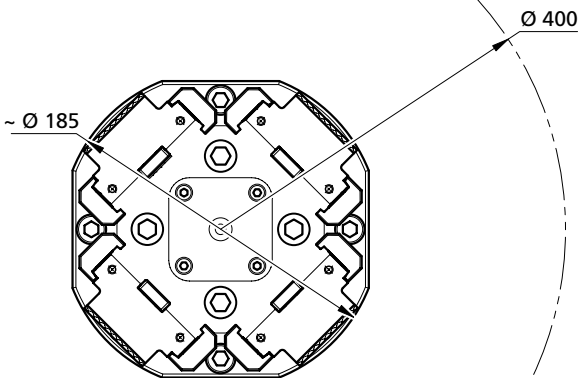
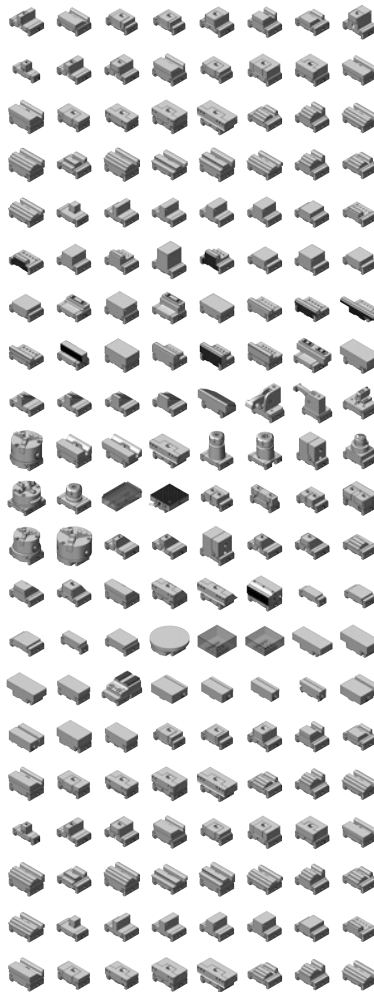
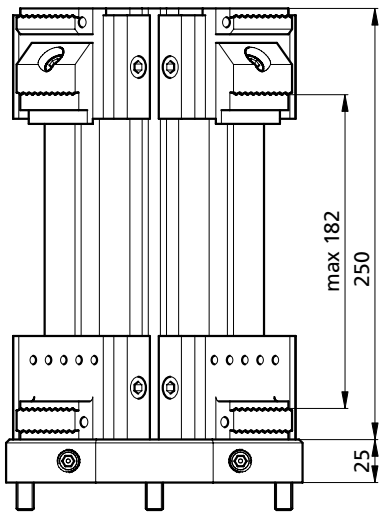
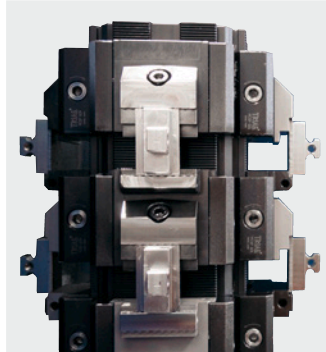
Spindle Ø170



X = 680 (X-340 X+340)
Y = 400 (Y-200 Y+200)
Z = 500



Mehr auf Seite 24
More on page 24

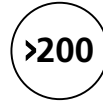
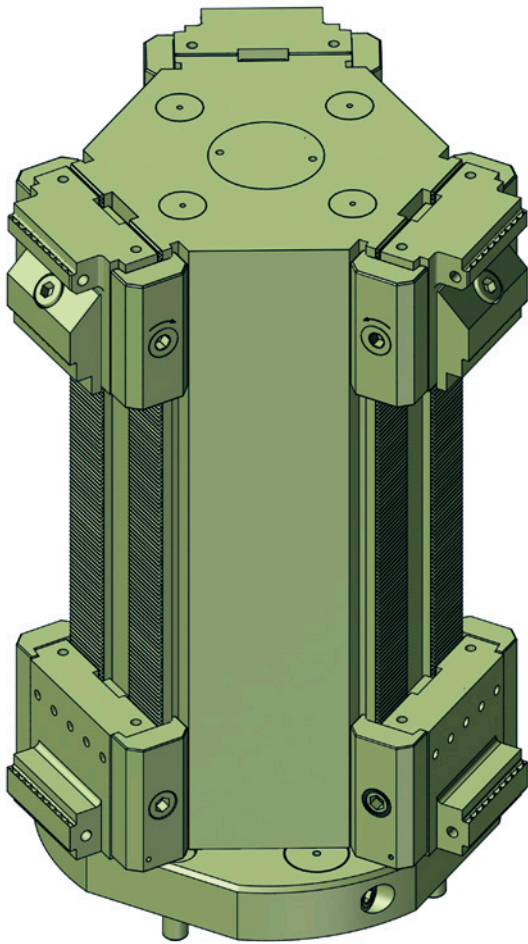




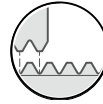
powerCLAMP

PCT Spannturm 3-seitig inkl. Adapterflansch
PCT 3-sided clamping tower incl. adapter flange

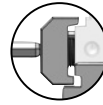
swiss MADE IN 
MODULAR[®]



Verschiedene Module
Different Modules



powerCLAMP Schnittstelle
powerCLAMP interface



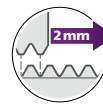
powerCLAMP Pratzensystem
powerCLAMP side clamp system




Höchste Modularität
Highest modularity

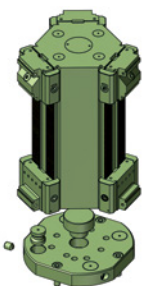


Keine spänefüllenden T-Nuten
No chip catching T-slots



Positionierschritte von 2 mm
Positioning increments of 2 mm

Bestellschlüssel <i>Order code</i>	Bezeichnung <i>Description</i>	~ Kg	Spannstellen <i>Clamping areas</i>	Spannbereich <i>Clamping area</i>
 YAPX30I-SET24	Maschinenset 24 / <i>Machine set 24</i>	46,8	3	max. 222



YAPX30I-SET24



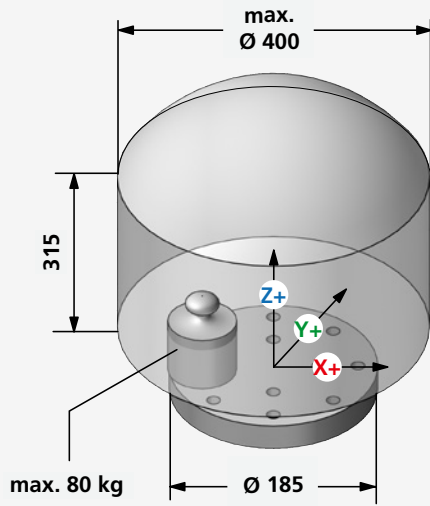
**Module gemäss Zusammenstellzeichnung
falls nicht anders vereinbart.**

*Modules according to assembly drawing
if not agreed otherwise.*

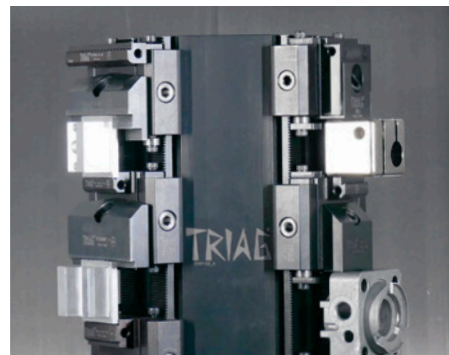
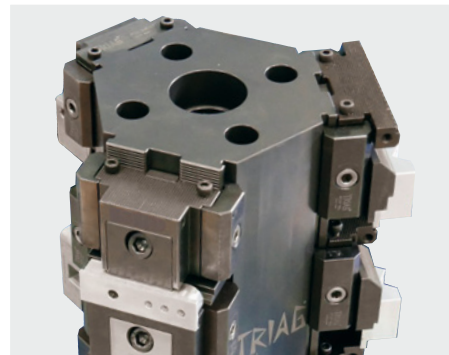
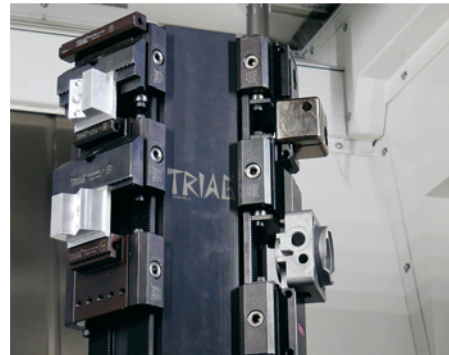
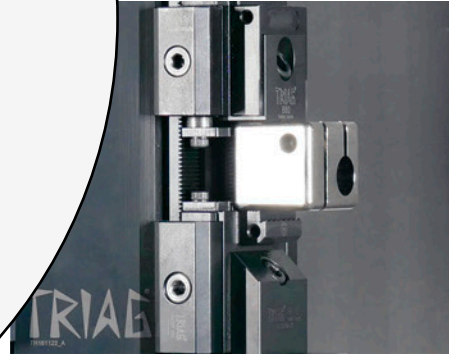
YASDA
PX30i



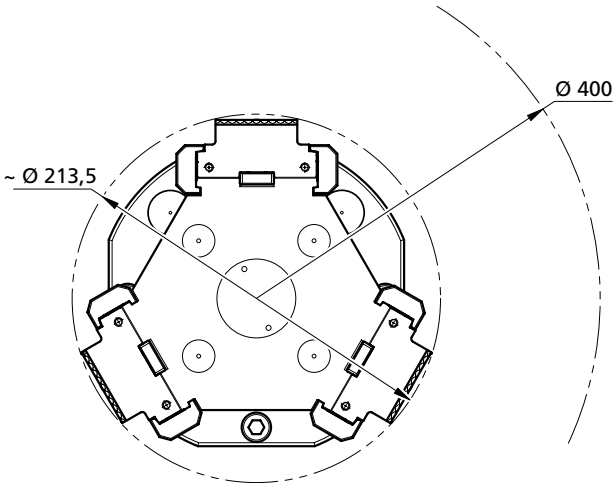
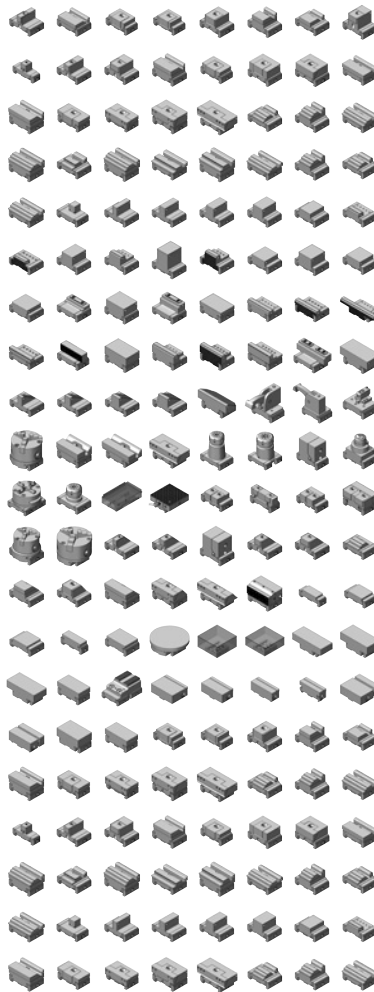
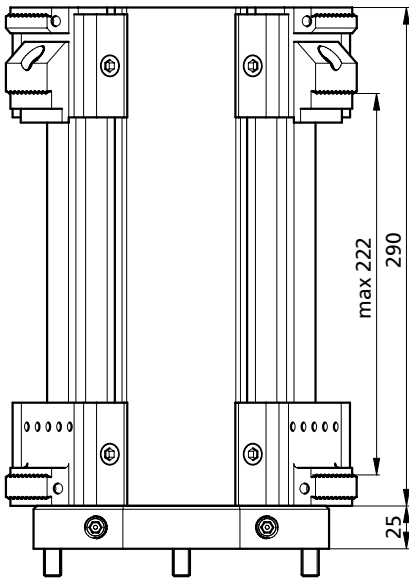
Spindle Ø170



X = 680 (X-340 X+340)
Y = 400 (Y-200 Y+200)
Z = 500



Mehr auf Seite 24
More on page 24

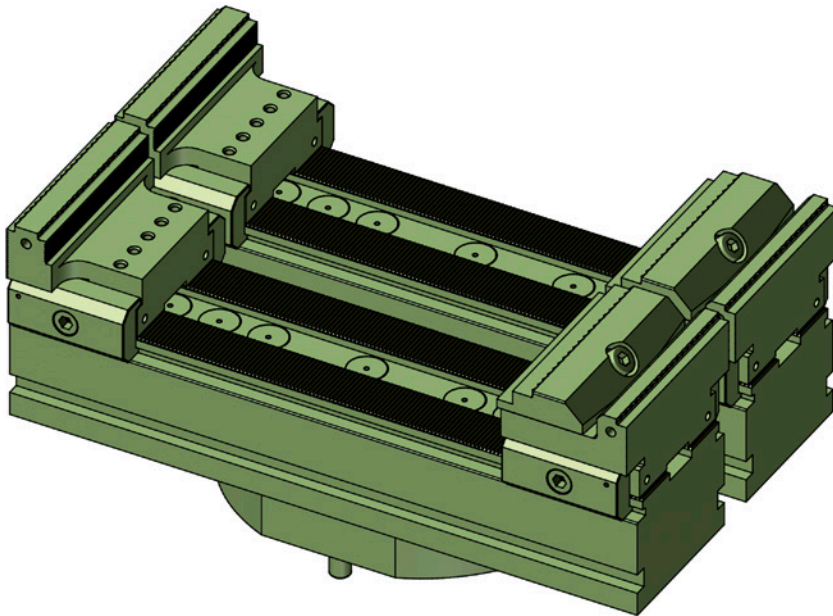




powerCLAMP


PCB 320H60 inkl. Adapterflansch
PCB 320H60 incl. adapter flange

swiss 
MODULAR[®]



YAPX30I-SET25



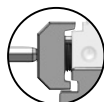
Bestellschlüssel Order code	Bezeichnung Description	~ Kg	Spannstellen Clamping areas	Spannbereich Clamping area
 YAPX30I-SET25	Maschinenset 25 / Machine set 25	33,5	2	max. 248



Verschiedene Module
Different Modules



powerCLAMP Schnittstelle
powerCLAMP interface



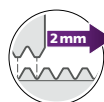
powerCLAMP Pratzensystem
powerCLAMP side clamp system



Höchste Modularität
Highest modularity



Keine spänefüllenden T-Nuten
No chip catching T-slots



Positionierschritte von 2 mm
Positioning increments of 2 mm

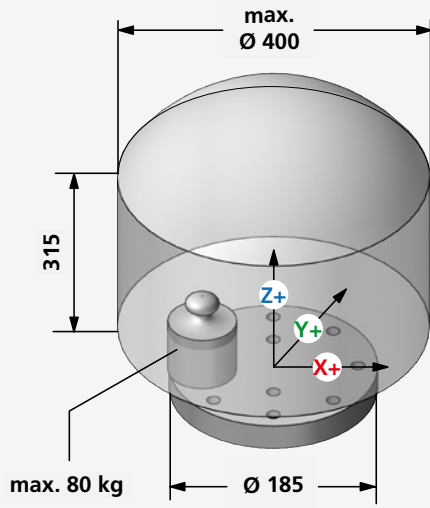
**Module gemäss Zusammenstellzeichnung
falls nicht anders vereinbart.**

*Modules according to assembly drawing
if not agreed otherwise.*

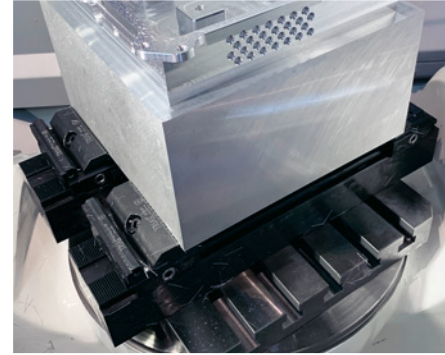
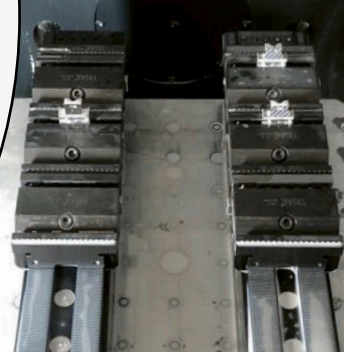
YASDA
PX30i



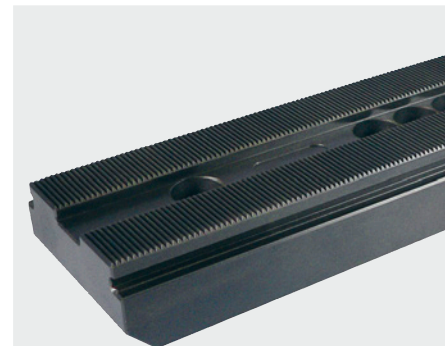
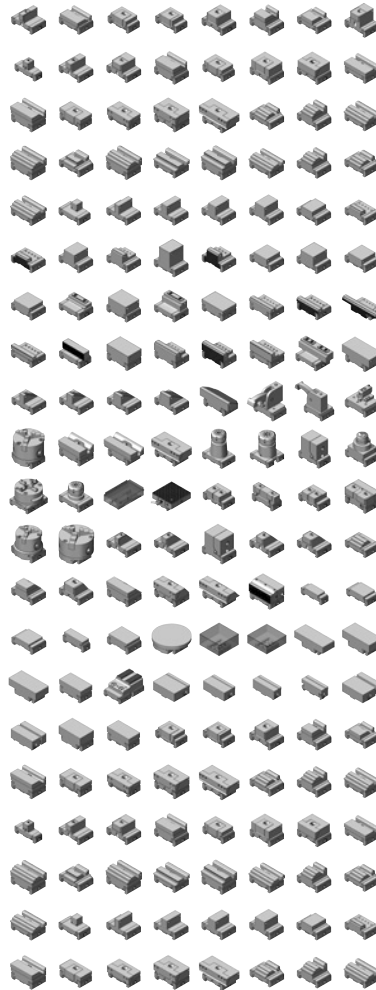
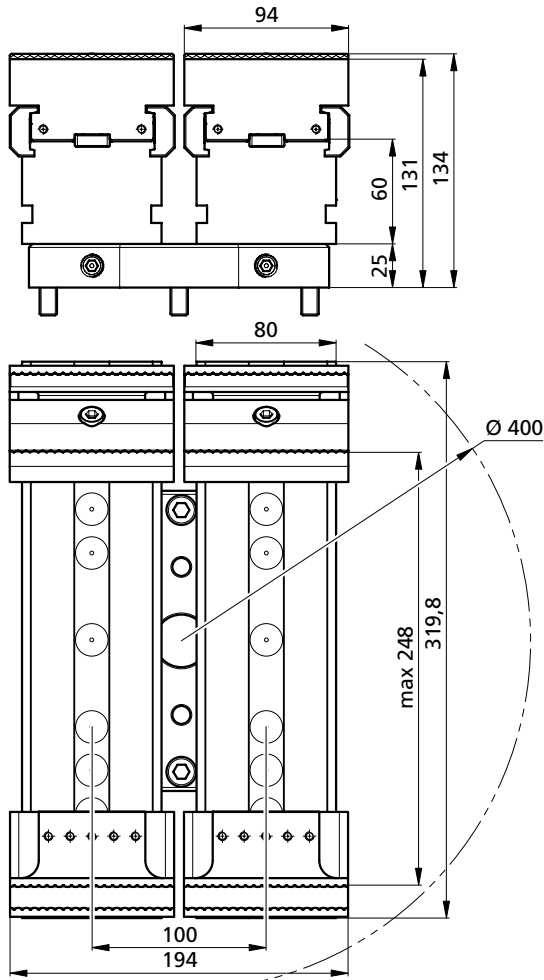
Spindle Ø170



X = 680 (X-340 X+340)
Y = 400 (Y-200 Y+200)
Z = 500



Mehr auf Seite 24
More on page 24

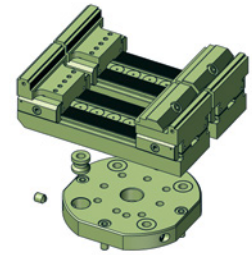
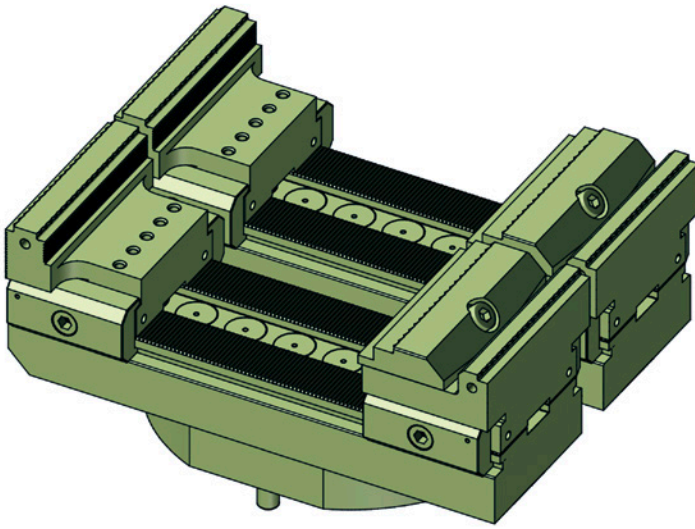




powerCLAMP


PCB 250 inkl. Adapterflansch
PCB 250 incl. adapter flange

swiss 
MODULAR[®]



YAPX30I-SET26



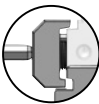
Bestellschlüssel Order code	Bezeichnung Description	~ Kg	Spannstellen Clamping areas	Spannbereich Clamping area
 YAPX30I-SET26	Maschinenset 26 / Machine set 26	19,5	2	max. 180



>200
Verschiedene Module
Different Modules



powerCLAMP Schnittstelle
powerCLAMP interface



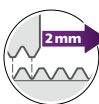
powerCLAMP Pratzensystem
powerCLAMP side clamp system



M
Höchste Modularität
Highest modularity



Keine spänefüllenden T-Nuten
No chip catching T-slots



Positionierschritte von 2 mm
Positioning increments of 2 mm

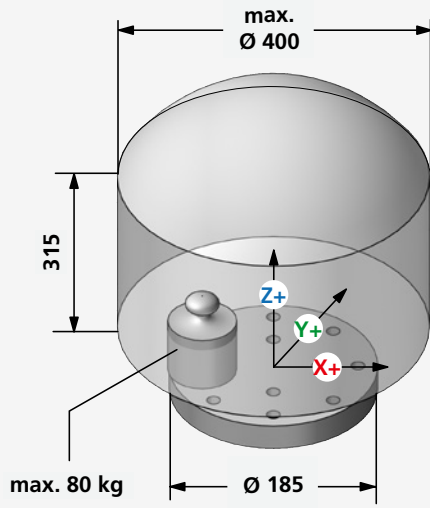
Module gemäss Zusammenstellzeichnung
falls nicht anders vereinbart.

Modules according to assembly drawing
if not agreed otherwise.

YASDA
PX30i

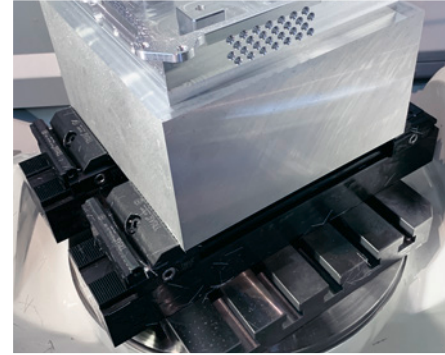
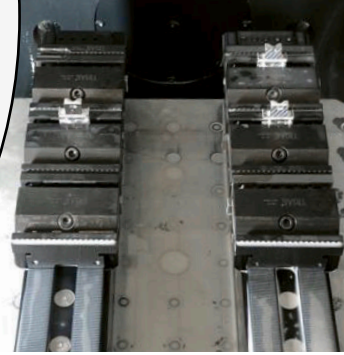


Spindle Ø170

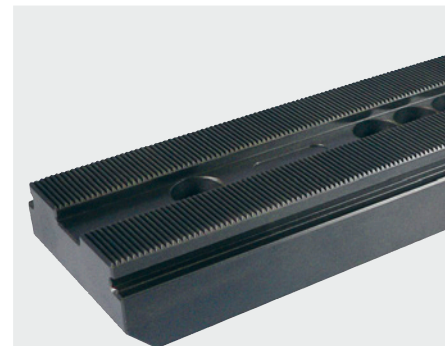
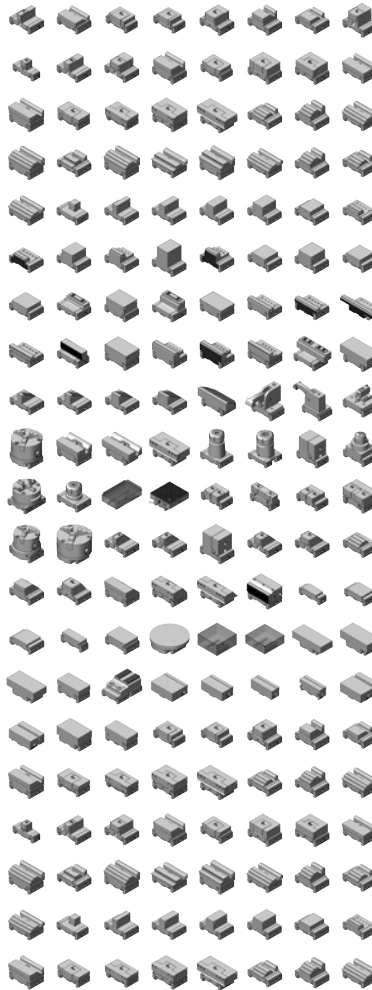
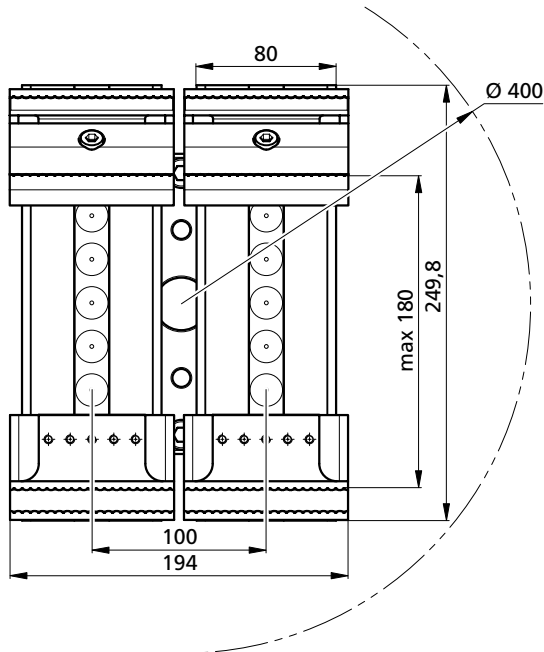
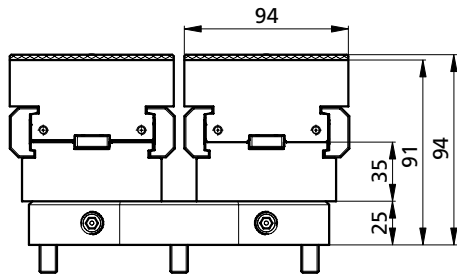


max. 80 kg

X = 680 (X-340 X+340)
Y = 400 (Y-200 Y+200)
Z = 500



Mehr auf Seite 24
More on page 24





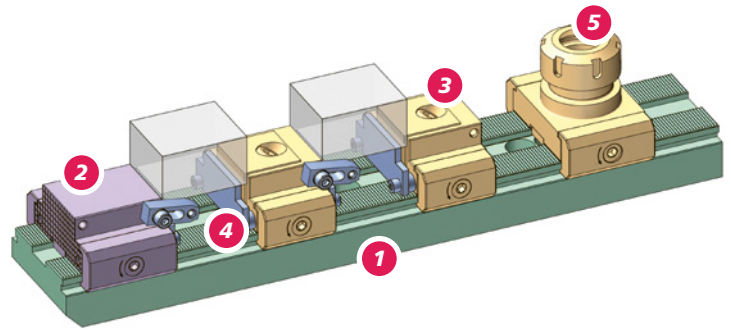
powerCLAMP

Stellen Sie Ihre eigenen Sets zusammen
Make your own sets



BESTELLBEISPIEL / ORDERING EXAMPLE

1x PCSET18-450A 2x PCSET18-N3 1x PS1X50N62-ER32



Zu jeder Basisschiene gehört 1 Anschlagmodul «Tabelle 2» nach Ihrer Wahl!
Each base rail comes with 1 end module "table 2" of your choice!

1 Basisschienen / Base-rails					
PCSET18-250A	PCB2550250	PCSET18-600A	PCB4050600		
PCSET18-350A	PCB4050350	PCSET18-650A	PCB4050650		
PCSET18-400A	PCB4050400	PCSET18-700A	PCB4050700		
PCSET18-450A	PCB4050450	PCSET18-750A	PCB4050750		
PCSET18-500A	PCB4050500	PCSET18-800A	PCB4050800		
PCSET18-550A	PCB4050550				
PCSET18-320B	PCB50-320H60				
PCSET18-400B	PCB100-400H60				
PCSET18-500B	PCB100-500H60				
PCSET18-600B	PCB100-600H60				
PCSET18-650B	PCB100-650H60				
PCSET18-690B	PCB100-690H60				
PCSET18-850B	PCB100-850H60				

2 Anschlagmodule / End modules					
48		78		94	
PAND 48-34	PAND 48-49	PAND 78-34	PAND 78-49	PAND 94-34	PAND 94-49
01	02	05	06	07	08
PAND 48-34 PRF-A1	PAND 48-49 PRF-A1	<ul style="list-style-type: none"> F = glatt / flat R = geriffelt / double serrated = Direktprägebacken / Direct stamping 		PAND 94-34 PRF-A1	PAND 94-49 PRF-A1
03	04			09	10

5 Dreibackenfutter Spannzangenmodul Mini-Zentrischspanner Three-jaw chuck Collet module Mini-self centering vise					
PS3X125L87BSET	PS3X100L82BSET	PS3X80L75BSET	PS1X50N62-ER32	PCZ80L40PRG62	PCZ100L50



powerCLAMP

Stellen Sie Ihre eigenen Sets zusammen
Make your own sets



3 Niederzugspanmodule / Pull down clamp modules

48		78		94	
PS1 R48N34 B80N 	PS1 R48N49 B80N 	PS1 R78N49 B90R78 	PS1 F48N49 B90F78 	PS1 R94N49 B90 	PS1 F94N49 B90
PCSET18-N1	PCSET18-N2	PCSET18-N5	PCSET18-N6	PCSET18-N7	PCSET18-N8
PS1 F48N34 B80N 	PS1 F48N49 B80N 	F = glatt / flat R = geriffelt / double serrated = Direktprägebacken / Direct stamping		PS1 R94N49 B93 	
PCSET18-N3	PCSET18-N4			PCSET18-N9	

Linearspanmodule / Linear clamp modules

PS1 PF 48L34 B115P 	PS1 PF 48L49 B115P 	PS1 R78L34 B141 	PS1 F78L34 B140 	PS1 PF 94L34 B120P 	PS1 PF 94L49 B120P
PCSET18-L1	PCSET18-L2	PCSET18-L5	PCSET18-L6	PCSET18-L9	PCSET18-L11
PS1 R48L49 B106 	PS1 F48L49 B105 	PS1 R78L49 B141 	PS1 F78L49 B140 	PS1 R94L34 B111 	PS1 F94L34 B110
PCSET18-L3	PCSET18-L4	PCSET18-L7	PCSET18-L8	PCSET18-L12	PCSET18-L13
PS1 R48L34 B106 	PS1 F48L34 B105 	Bei jedem Niederzug und Linear Spanmodule sind 2 Parallelunterlagen nach Ihrer Wahl und 1 Fräsanschlag enthalten. 		PS1 R94L49 B111 	PS1 F94L49 B110
PCSET18-L16	PCSET18-L17			PCSET18-L14	PCSET18-L15

Each pull-down and linear clamping module includes 2 parallels of your choice and 1 milling buffer.

4 Parallelunterlagen / Steel parallels

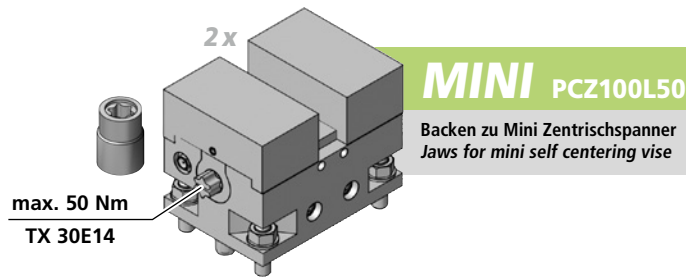
48	78	94
PCU29047 B48- ...	PCU39077 B78- ...	PCU29093 B94- ...
H PCU 20 047 PCU 24 047 PCU29047 PCU 31 047 PCU 34 047 PCU 39 047 PCU 44 047 PCU 46 047	H PCU 20 077 PCU 24 077 PCU 29 077 PCU 31 077 PCU 34 077 PCU39077 PCU 44 077 PCU 46 077	H PCU 14 093 PCU 20 093 PCU 24 093 PCU29093 PCU 31 093 PCU 34 093 PCU 39 093 PCU 44 093 PCU 46 093 PCU 47 093

Fräsanschlag / Milling buffer 1 x Inklusive / Included



powerCLAMP

Modulares Spannsystem
Modular workholding system



<p>Spannbereich / Clamping range B175-26 6 - 26 mm</p> <p>i 57HRC</p>	<p>Spannbereich / Clamping range B175-45 25 - 45 mm</p> <p>i 57HRC</p>	<p>Spannbereich / Clamping range B175-64 44 - 64 mm</p> <p>i 57HRC</p>	<p>Spannbereich / Clamping range B170, B172 (weich/soft) 0 - 20 mm</p> <p>i HV700x0,2mm</p>
<p>Spannbereich / Clamping range B175-83 63 - 83 mm</p> <p>i 57HRC</p>	<p>Spannbereich / Clamping range B175-102 82 - 102 mm</p> <p>i 57HRC</p>	<p>Spannbereich / Clamping range B175-121 101 - 121 mm</p> <p>i 57HRC</p>	<p>Zum Erstellen Ihrer individuellen Formbacke: Maximalen Bearbeitungsprofiltiefe If a dedicated jaw is being machined: Max. workpiece machining depth</p>
<p>Spannbereich / Clamping range B173-26 6 - 26 mm</p> <p>i HV700x0,2mm</p>	<p>Spannbereich / Clamping range B173-45 25 - 45 mm</p> <p>i HV700x0,2mm</p>	<p>Spannbereich / Clamping range B173-64 44 - 64 mm</p> <p>i HV700x0,2mm</p>	<p>Spannbereich / Clamping range B176-80 8 - 80 mm</p> <p>PRG1003M8 Optional erhältlich Optional accessory</p> <p>i HV700x0,2mm</p>
<p>Spannbereich / Clamping range B173-83 63 - 83 mm</p> <p>i HV700x0,2mm</p>	<p>Spannbereich / Clamping range B173-102 82 - 102 mm</p> <p>i HV700x0,2mm</p>		

Drehmoment Torque		Spannkraft Workholding force		
Nm	(lb-ft)	~daN	~(lb)	~t
10	7,4	= 200	440	0,2
20	14,8	= 500	1'102	0,5
30	22,2	= 1'000	2'204	1,0
40	29,6	= 1'300	2'866	1,3
50	37,0	= 1'600	3'527	1,6

Für mehr Informationen, Zubehör oder Backensets > [Gesamtkatalog/powerCLAMP](#)
For further informations, accessories or jaw sets > [General catalogue/powerCLAMP](#)



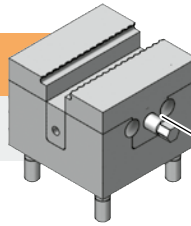
triCENTRO

Modulares Spannsystem
Modular workholding system

swiss 
MODULAR

MCZ40L30 MICRO

Backen zu micro Zentrischspanner
Jaws for micro self centering vise

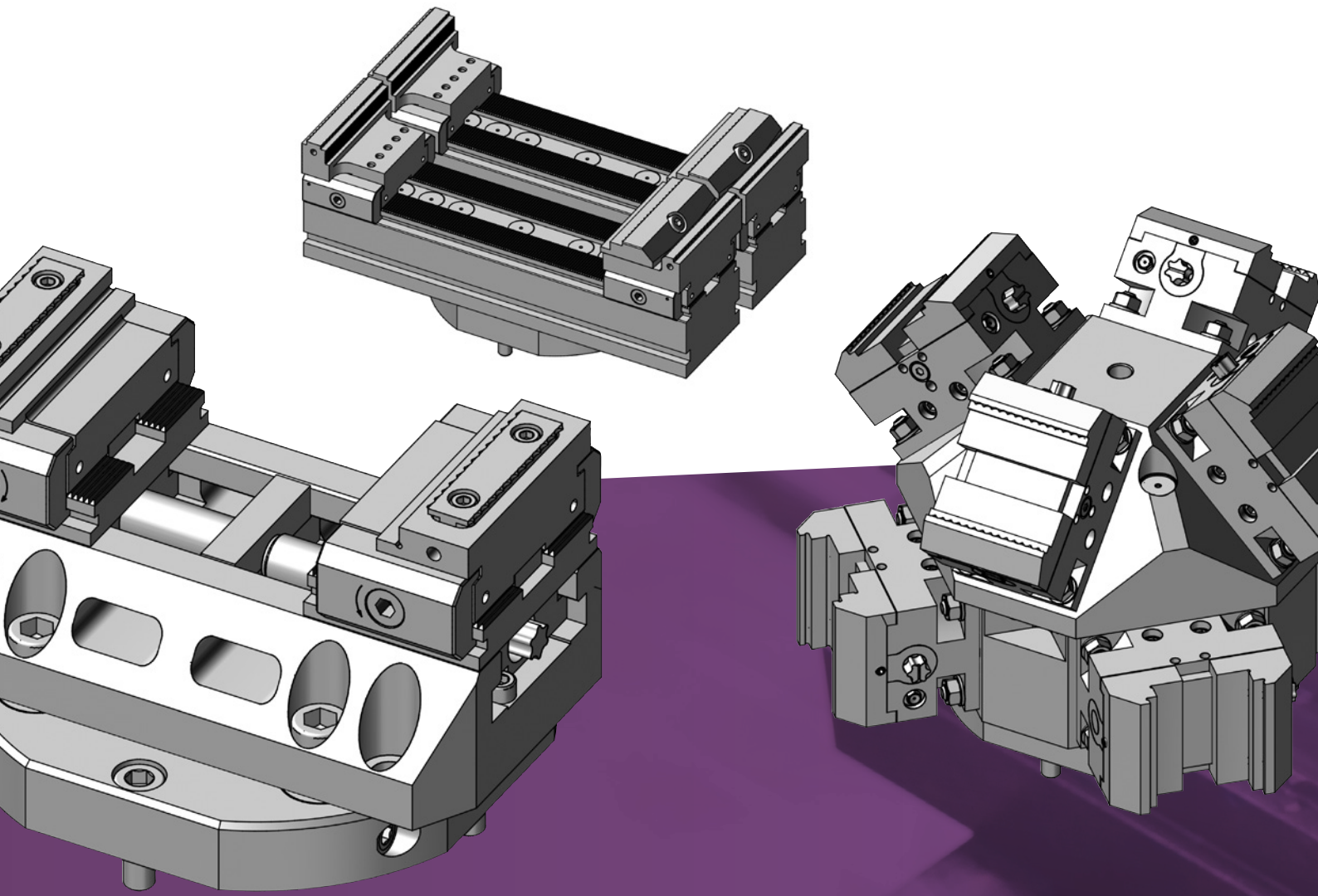


max. 7 Nm
Nuss 1/4 - sw 4,5

<p>Spannbereich / Clamping range B190-13 3 - 31 mm</p>	<p>Spannbereich / Clamping range B190-22 12 - 22 mm</p>	<p>Spannbereich / Clamping range B190-31 21 - 31 mm</p>
<p>Spannbereich / Clamping range B190W6-40 variabel</p>	<p>Spannbereich / Clamping range B190W10-40 variabel</p>	<p>Spannbereich / Clamping range B190W20-40 variabel</p>
<p>Spannbereich / Clamping range B190W30-40 variabel</p>	<p>Zum Erstellen Ihrer individuellen Formbacke: Maximalen Bearbeitungsprofiltiefe If a dedicated jaw is being machined: Max. workpiece machining depth</p>	

Drehmoment Torque		Spannkraft Workholding force		
Nm	(lb-ft)	~daN	~(lb)	~t
4	3	= 457	1'007	0,46
5	3,7	= 571	1'259	0,57
6	4,4	= 686	1'512	0,69
7	5,2	= 800	1'764	0,8

Für mehr Informationen, Zubehör oder Backensets > [Gesamtkatalog/triCENTRO](#)
For further informations, accessories or jaw sets > [General catalogue/triCENTRO](#)



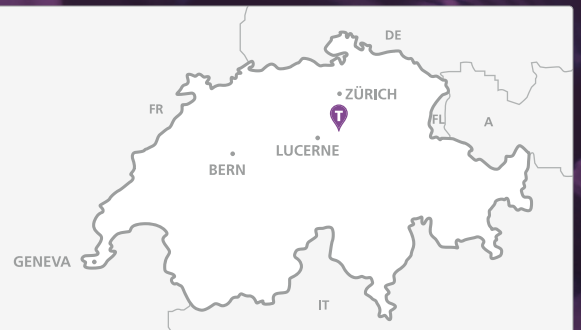
Triag International AG

Bösch 84 CH-6331 Hünenberg

☎ +41 41 727 27 77

✉ spannen@triag-int.ch

✉ clamping@triag-int.ch



Mass- und Konstruktionsänderungen
bleiben uns vorbehalten. *We reserve
the right to modify dimensions and
structural design.*

triag-int.ch

Official Website

swissmodular.com



**08
24**

