

# ata

**Air Tools**  
Product Synopsis

[www.atagroup.com](http://www.atagroup.com)

# Air Tool Specifications 1/2

## TECHNICAL DATA

Part Number	Product Name	Speed	Power		Weight		Declared Vibration Level	Uncertainty K	Noise Level	Air Consumption
		<i>rpm</i>	<i>hp</i>	<i>Watts</i>	<i>Kg</i>	<i>lb</i>	<i>m/s<sup>2</sup></i>	<i>m/s<sup>2</sup></i>	<i>dbA</i>	<i>cfm</i>
BLM16L	BELT SANDER	16,000	0.50	375	1.30	2.86	1.59	0.53	73	21.19
RA1150-115-M14	ANGLE GRINDER SANDER	12,000	1.50	1150	2.01	4.43	7.50	1.20	91	40.00
RA1150-125-5/8	ANGLE GRINDER SANDER	12,000	1.50	1150	2.01	4.43	7.50	1.20	91	40.00
RA1150-125-5/8	ANGLE GRINDER SANDER	12,000	1.50	1150	2.01	4.43	7.50	1.20	91	40.00
RA1150-125-M14	ANGLE GRINDER SANDER	12,000	1.50	1150	2.01	4.43	7.50	1.20	91	40.00
RA12M-100	ANGLE GRINDER	12,000	0.90	675	1.81	3.99	5.97	1.57	77	25.07
RA12M-100A	ANGLE GRINDER	12,000	0.90	675	1.81	3.99	2.92	1.02	77	25.07
RA12M-115	ANGLE GRINDER	12,000	0.90	675	1.81	3.99	5.85	1.48	77	25.07
RA12M-115A	ANGLE GRINDER	12,000	0.90	675	1.81	3.99	2.78	1.07	77	25.07
RA12M-B	ANGLE GRINDER	12,000	0.90	675	1.19	2.62	3.29	1.15	77	21.90
RA12M-C	ANGLE GRINDER	12,000	0.90	675	1.19	2.62	3.61	1.63	77	21.90
RA1650-115A	HIGH POWER ANGLE GRINDER	12,000	2.20	1650	2.11	4.64	5.63	0.37	91	35.00
RA1650-125A	HIGH POWER ANGLE GRINDER	12,000	2.20	1650	2.11	4.64	5.63	0.37	91	35.00
RA1650-SM14A	HIGH POWER ANGLE SANDER	12,000	2.20	1650	1.92	4.22	3.00	0.20	91	35.00
RA1650-S58A	HIGH POWER ANGLE SANDER	12,000	2.20	1650	1.92	4.22	3.00	0.20	91	35.00
RA5	LOW SPEED ANGLE SANDER	5,500	1.10	820	2.75	6.05	1.25	N/A	69	32.49
RA6 AVH	LARGE ANGLE GRINDER	6,500	2.00	1500	3.50	7.70	5.33	1.35	79	67.09
RA8 AVH	LARGE ANGLE GRINDER	8,500	2.00	1500	3.50	7.70	5.33	1.35	79	67.09
RALM20LR	BELT SANDER	20,000	0.40	300	0.86	1.89	1.73	N/A	74	20.13
RAM10LR	SMALL ANGLE SANDER	12,000	0.40	300	0.59	1.30	2.51	1.50	74	20.13
RAM16L	SMALL ANGLE SANDER	16,000	0.50	370	1.30	2.86	4.41	1.65	73	21.19
RAM20LR	SMALL ANGLE SANDERS	20,000	0.40	300	0.59	1.30	2.58	1.45	75	20.13
RAMX13LR	EXTENDED RIGHT ANGLE SANDER	13,000	1.10	820	1.30	2.86	2.26	N/A	76	21.90
RPM25R	SMALL ANGLE SANDER	25,000	0.11	85	0.23	0.51	3.86	1.88	69	8.12
SDM26L	STRAIGHT DIE GRINDER	25,000	0.40	300	0.52	1.14	3.14	1.31	73	20.13
SDM26LR	STRAIGHT DIE GRINDER	25,000	0.40	300	0.52	1.14	3.14	1.31	72	20.13
SDM30L	STRAIGHT DIE GRINDER	30,000	0.40	300	0.52	1.14	3.11	1.30	73	20.13
SDM30LR	STRAIGHT DIE GRINDER	30,000	0.40	300	0.52	1.14	3.11	1.30	73	20.13

## Air Tool Specifications 2/2

### TECHNICAL DATA

Part Number	Product Name	Speed	Power		Weight		Declared Vibration Level	Uncertainty K	Noise Level	Air Consumption
		<i>rpm</i>	<i>hp</i>	<i>Watts</i>	<i>Kg</i>	<i>lb</i>	<i>m/s<sup>2</sup></i>	<i>m/s<sup>2</sup></i>	<i>dbA</i>	<i>cfm</i>
SDM37L	STRAIGHT DIE GRINDER	37,000	0.40	300	0.52	1.14	3.17	1.31	75	20.13
SDM37LR	STRAIGHT DIE GRINDER	37,000	0.40	300	0.52	1.14	3.17	1.31	74	20.13
SHG18LR	EXTENDED STRAIGHT DIE GRINDER	18,000	1.50	1120	2.50	5.50	2.39	N/A	70	39.90
SM12KL	HIGH POWER DIE GRINDER	12,000	1.10	820	0.73	1.60	2.99	1.29	74	11.00
SM12KLR	HIGH POWER DIE GRINDER	12,000	1.10	820	0.73	1.60	2.99	1.29	74	11.00
SM16KL	HIGH POWER DIE GRINDER	16,000	1.10	820	0.73	1.60	3.49	1.34	77	16.00
SM16KLR	HIGH POWER DIE GRINDER	16,000	1.10	820	0.73	1.60	3.49	1.34	75	16.00
SM25KL	HIGH POWER DIE GRINDER	25,000	1.10	820	0.73	1.60	3.21	1.31	78	35.00
SM25KLR	HIGH POWER DIE GRINDER	25,000	1.10	820	0.73	1.60	3.21	1.31	77	35.00
SMD18KLR	LOW VIBRATION DIE GRINDER	18,000	1.10	820	0.88	1.93	2.31	N/A	75	20.00
SMD25KLR	LOW VIBRATION DIE GRINDER	25,000	1.10	820	0.88	1.93	2.27	N/A	77	35.00
SMD30LR	LOW VIBRATION DIE GRINDER	30,000	0.42	310	0.32	0.71	2.68	1.28	75	12.50
SMX05KLR	EXTENDED STRAIGHT DIE GRINDER	5,000	1.10	820	1.58	3.47	1.77	N/A	75	18.00
SMX12KL	EXTENDED STRAIGHT DIE GRINDER	12,000	1.10	820	1.24	2.73	2.84	1.29	74	11.00
SMX12KLR	EXTENDED STRAIGHT DIE GRINDER	12,000	1.10	820	1.30	2.85	2.84	1.29	74	11.00
SMX16KL	EXTENDED STRAIGHT DIE GRINDER	16,000	1.10	820	1.24	2.73	3.19	1.31	77	16.00
SMX16KLR	EXTENDED STRAIGHT DIE GRINDER	16,000	1.10	820	1.30	2.85	3.19	1.31	75	16.00
SMX25KL	EXTENDED STRAIGHT DIE GRINDER	25,000	1.10	820	1.24	2.73	3.48	1.31	78	35.00
SMX25KLR	EXTENDED STRAIGHT DIE GRINDER	25,000	1.10	820	1.30	2.85	3.48	1.31	77	35.00
SPM45R	PENCIL GRINDER	45,000	0.11	85	0.17	0.38	2.46	N/A	68	8.00
SPM60R	PENCIL GRINDER	60,000	0.11	85	0.17	0.38	1.92	N/A	68	8.00
SPM80R	PENCIL GRINDER	80,000	0.10	80	0.17	0.38	1.72	N/A	66	7.00
SPT100R	PENCIL GRINDER	100,000	0.08	63	0.15	0.33	1.13	N/A	70	6.00
SPT80R	PENCIL GRINDER	80,000	0.08	63	0.15	0.33	1.98	N/A	68	7.00
ST100	TURBINE PENCIL GRINDER	100,000	0.06	40	0.24	0.53	0.95	N/A	62	6.00
SXM12KLR	EXTENDED STRAIGHT DIE GRINDER	12,000	1.10	820	1.09	2.40	1.70	N/A	74	11.00
SXM16KLR	EXTENDED STRAIGHT DIE GRINDER	16,000	1.10	820	1.09	2.40	2.67	1.67	75	16.00
SXM25KLR	EXTENDED STRAIGHT DIE GRINDER	25,000	1.10	820	1.09	2.40	2.67	1.67	77	35.00



# SPT Oil Free Pencil Grinder

Unique 100,000rpm or 80,000rpm  
Oil Free Pencil Grinders

## Features & Benefits

- **Oil free** – no contamination of workpiece
- **Unique motor design** – less friction, no wear parts in motor
- **100,000rpm or 80,000rpm** – results in a finer finish
- **High precision steel bearings** – offers extended service life
- **Stainless steel construction** – no corrosion to components

## Tool Specification

- Speed: 100,000 or 80,000rpm
- Power: 63W
- Weight: 0.15kg
- Collet: 3mm
- Throttle: Roll

## Industries

- Aerospace
- Mold & Die

## Applications

Precision finishing with 3mm head diameter miniature burs and mounted points.





# ST100 Oil Free Turbine Grinder

100,000rpm Oil Free Turbine Pencil Grinder

## Features & Benefits

- **Oil free** – no contamination of workpiece
- **Small diameter** – facilitates precise control
- **High speed** – results in a finer finish
- **Ergo sleeve** – fitted for operator comfort
- **Improved throttle design** – results in enhanced torque

## Tool Specification

- Speed: 100,000rpm
- Power: 40W
- Weight: 0.24kg
- Collet: 3mm
- Throttle: Roll

## Industries

- Aerospace
- Mold & Die
- Foundry

## Applications

Precision deburring & finishing.





# SPM Pencil Grinder

80,000, 60,000 & 45,000rpm Pencil Grinders

## Features & Benefits

- **Slim design** – ideal for intricate work
- **Small diameter** – facilitates precise control
- **Range of speed options** – suitable for a range of consumables
- **Removable collet guard** – for improved control and spindle protection
- **Improved throttle design** – results in enhanced torque
- **Moulded body** – improved operator comfort

## Tool Specification

- **Speed:** 80,000rpm (SPM80R)  
60,000rpm (SPM60R)  
45,000rpm (SPM45R)
- **Power:** 80W (SPM80R)  
85W (SPM60R)  
85W (SPM45)
- **Weight:** 0.17kg
- **Collet:** 3mm
- **Throttle:** Roll

## Industries

- Aerospace
- Mold & Die
- Foundry

## Applications

Precision deburring & finishing.





# RPM Pencil Grinder/Sander

25,000rpm Right Angle Pencil Grinder and Sander

## Features & Benefits

- **Slim design** – ideal for intricate work
- **Small diameter** – facilitates precise control
- **Small angle head** – ideal for restricted access
- **Improved throttle design** – results in enhanced torque
- **Moulded body** – improved operator comfort

## Tool Specification

- Speed: 25,000rpm
- Power: 85W
- Weight: 0.23kg
- Collet: 3mm
- Throttle: Roll

## Industries

- Aerospace
- Mold & Die
- Foundry

## Applications

Suitable for miniature burs and ATA QCD (20mm, 25mm & 38mm), for precision deburring and finishing.





# SDM High Speed Die Grinder

37,000, 30,000 & 25,000rpm Die Grinders

## Features & Benefits

- **Excellent power to weight ratio** – increased productivity
- **Moulded sleeve** – fitted for operator comfort
- **Additional collet options** – suits a range of shank diameters
- **One handed operation** – suitable for general deburring and finishing
- **Compact design** – for light to medium duty applications
- **Exhaust options** – either front or rear exhaust options

## Tool Specification

- Speed: 37,000, 30,000 or 25,000rpm
- Power: 300W
- Weight: 0.52kg
- Collet: 6mm
- Throttle: Lever

## Industries

- Foundry
- Aerospace
- Mold & Die
- Fabrication

## Applications

A wide range of deburring and finishing applications with use of burs and mounted points. Ensure that speed of the tool does not exceed the max speed of the consumable.





# SMD30LR Die Grinder

30,000rpm Low Vibration Die Grinder

## Features & Benefits

- **Front vibration dampening system** – absorbs process and consumable vibration
- **New motor design** – improved power to weight ratio
- **Moulded body design** – improved aesthetics, ergonomics and insulation
- **Lightweight design** – results in improved operator comfort
- **Rear exhaust** – offers reduced noise

## Tool Specification

- Speed: 30,000rpm
- Power: 310W
- Weight: 0.32kg
- Collet: 6mm
- Throttle: Lever
- Exhaust: Rear

## Industries

- Shipbuilding
- Foundry
- Aerospace
- Mold & Die
- Fabrication

## Applications

Ideally suited to 6mm shank burs with head diameter  $\leq 12$ mm.





# SMK Die Grinder

High Powered Die Grinders

## Features & Benefits

- **Motor design** - increased power
- **Excellent power to weight ratio** - compact, high power
- **Moulded body design** - improved aesthetics & insulation
- **Lever design** - improved operator comfort
- **Exhaust options** - either front or rear exhaust options

## Tool Specification

- Speed: 25,000, 16,000 or 12,000rpm
- Power: 820W
- Weight: 0.75kg
- Collet: 6mm
- Throttle: Lever



## Industries

- Foundry
- Automotive
- Mold & Die
- Fabrication



## Applications

A wide range of deburring and finishing applications with use of burs and abrasive flap wheels.



# SMDK Low Vibration Die Grinder

Vibration Dampening, High Powered Straight Die Grinders

## Features & Benefits

- **Front vibration dampening system** – absorbs process and consumable vibration
- **Moulded body design** – improved aesthetics and insulation
- **Lever design** – offers improved operator comfort
- **Motor design** – results in increased power
- **Rear exhaust** – reduced noise

## Tool Specification

- Speed: 25,000, or 18,000rpm
- Power: 820W
- Weight: 0.80kg
- Collet: 6mm
- Throttle: Lever



## Industries

- Shipbuilding
- Foundry
- Aerospace
- Mold & Die
- Fabrication

## Applications

Designed for use with carbide burs.





# SMXK Extended Body Die Grinder

High Powered Extended Body Die Grinders

## Features & Benefits

- **Motor design** - increased power
- **Moulded body design** - improved aesthetics and insulation
- **Lever design** - improved operator comfort
- **Extended body** - for two handed operation
- **Exhaust options** – either front or rear exhaust options

## Tool Specification

- Speed: 25,000, 16,000 or 12,000rpm
- Power: 820W
- Weight: 1.3kg
- Collet: 6mm
- Throttle: Lever



## Industries

- Foundry
- Automotive
- Mold & Die
- Fabrication



## Applications

A wide range of deburring and finishing applications with use of burs and abrasive flap wheels for two handed use.



# SXMK Extended Spindle Die Grinder

High Powered Extended Spindle Die Grinders

## Features & Benefits

- **Motor design** - increased power
- **Moulded body design** - improved aesthetics and insulation
- **Lever design** - improved operator comfort
- **Extended spindle** – for restricted access applications

## Tool Specification

- Speed: 25,000, 16,000 or 12,000rpm
- Power: 820W
- Weight: 1.09kg
- Collet: 6mm
- Throttle: Lever



## Industries

- Foundry
- Automotive
- Mold & Die
- Fabrication

## Applications

A wide range of deburring and finishing applications with use of burs and abrasive flap wheels, where access is an issue.



**ata**

Future Focus  
Precision Engineering



# SMX05 Extended Body Die Grinder

High Powered Extended Body Die Grinder

## Features & Benefits

- **Motor design** - increased power
- **Moulded body design** - improved aesthetics and insulation
- **Low speed, high torque** – does not stall under load
- **Lever design** - improved operator comfort
- **Extended body** - range for two handed operation

## Tool Specification

- Speed: 5,000rpm
- Power: 820W
- Weight: 1.58kg
- Collet: 6mm
- Throttle: Lever



## Industries

- Foundry
- Automotive
- Mold & Die
- Fabrication



## Applications

A wide range of deburring and finishing applications with use of burs and abrasive flap wheels.



# SHG18LR Extended Straight Die Grinder

Powerful Extended Die Grinder

## Features & Benefits

- **High power to weight ratio** – compared to high cycle grinders
- **Double handed operation** – offers improved operator control
- **Robust design** – ideal for heavy duty applications
- **Ergo sleeve** – results in improved operator comfort

## Tool Specification

- Speed: 18,000rpm
- Power: 1100W
- Weight: 2.5kg
- Collet: 6mm
- Throttle: Lever
- Exhaust: Rear



## Industries

- Foundry
- Ship building
- Fabrication



## Applications

Suitable for use with larger diameter burs and mounted points in heavy duty applications.



# RA12M Angle Grinder

12,000rpm Right Angle Grinder

## Features & Benefits

- **Spindle lock button** – accommodates faster disc change
- **Anti vibration side handle** – improved ergonomics and reduces vibration
- **Quick release adjustable guard** – allows fast and easy guard adjustment
- **Durable gear design** – offers increased service life
- **Auto balancer option** – reduces consumable vibration

## Tool Specification

- Speed: 12,000rpm
- Power: 675W
- Weight: 1.81kg
- Exhaust: Rear

## Consumables

- Suited to 100mm (4") & 115mm (4 ½") Grinding Discs, Cutting Discs and Flap Discs.
- ≤75mm (3") Cup Brushes – RA12M-B version
- Burs and QCD – RA12M-C version



**Angle Grinder**



**Collet**



**Cup Brush**



# RA1150 Angle Grinder/Sander

Dual-Purpose Angle Grinder and Sander In One

## Features & Benefits

- **Removeable back flange** – quick transition between grinder and sander
- **Dual-functionality** – enhances efficiency
- **Spindle lock button** – accommodates faster disc change
- **Anti vibration side handle** – improved ergonomics and reduces vibration
- **Quick release adjustable guard** – allows fast and easy guard adjustment
- **Durable gear design** – offers increased service life

## Tool Specification

- Speed: 12,000rpm
- Power: 1150W
- Weight: 2.01kg
- Throttle: Lever
- Exhaust: Rear



## Industries

- Shipbuilding
- Offshore Fabrication
- Foundry
- Rail Sector
- General Fabrication

## Consumables

- 115mm and 125mm versions to suit Grinding, Cutting, Flap Discs and Fibre Discs, with either an M14 or 5/8-11 spindle





# RA1650 Angle Grinder

High Powered Right Angle Grinder

## Features & Benefits

- **1650W / 2.2HP Motor** – increased productivity
- **Spindle lock button** – accommodates faster disc change
- **Autobalancer** – reducing vibration exposure
- **Anti vibration side handle** – improved ergonomics and reduces vibration
- **Quick release adjustable guard** – allows fast and easy guard adjustment
- **Kevlar vane material** – extended vane life and service intervals

## Tool Specification

- Speed: 12,000rpm
- Power: 1650W
- Weight: 2.11kg
- Throttle: Lever
- Exhaust: Rear



## Industries

- Shipbuilding
- Offshore Fabrication
- Foundry
- Rail Sector
- General Fabrication

## Consumables

- Models to suit 115mm & 125mm Grinding Discs, Cutting Discs and Flap Discs





# RA1650 Angle Sander

High Powered Right Angle Sander

## Features & Benefits

- **1650W / 2.2HP Motor** – increased productivity
- **Spindle lock button** – accommodates faster disc change
- **Autobalancer** – reducing vibration exposure
- **Anti vibration side handle** – improved ergonomics and reduces vibration
- **Quick release adjustable guard** – allows fast and easy guard adjustment
- **Kevlar vane material** – extended vane life and service intervals

## Tool Specification

- Speed: 12,000rpm
- Power: 1650W
- Weight: 2.11kg
- Throttle: Lever
- Exhaust: Rear



## Industries

- Shipbuilding
- Offshore Fabrication
- Foundry
- Rail Sector
- General Fabrication

## Consumables

- Suited to 115mm (4 ½”) & 125mm (5”) Fibre Discs mounted on a backing pad



**ata**

Future Focus  
Precision Engineering



# RA8-AVH & RA6-AVH Angle Grinders

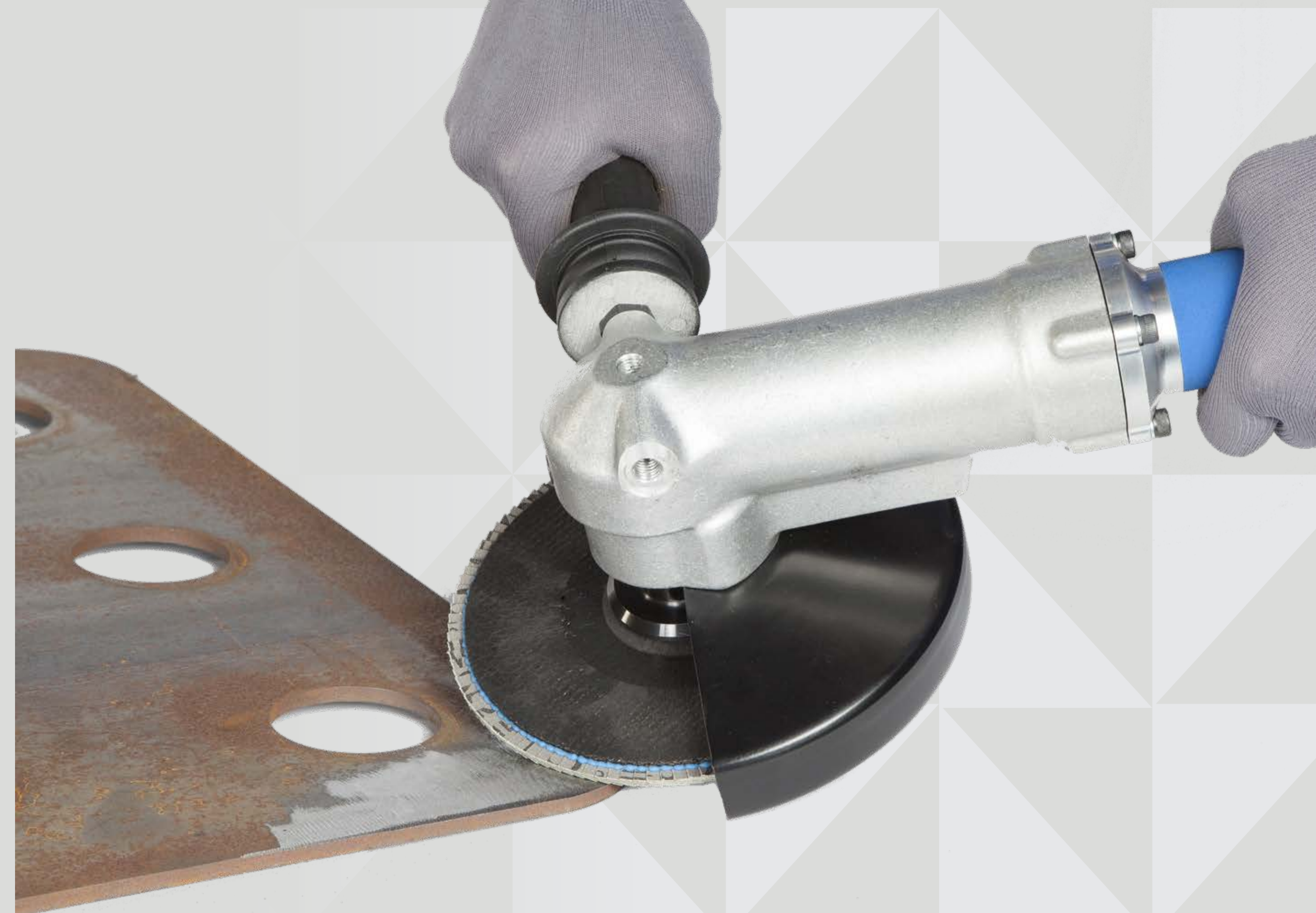
Powerful Large Angle Grinders

## Features & Benefits

- **High power motor** – ideal for heavy duty applications
- **Robust design** – suited to arduous applications
- **Side handle** – designed to assist with vibration reduction
- **Piston exhaust** – assists with noise reduction
- **Suits various abrasives** – allows for cutting, grinding and flap discs
- **180mm and 230mm options** – suits a wide range of applications

## Tool Specification

- Speed: RA8-AVH - 8,500rpm  
RA6-AVH - 6,500rpm
- Power: 1500W
- Weight: 3.5kg
- Throttle: Lever



## Industries

- Foundry
- Ship building
- Automotive
- Fabrication

## Applications

A wide range of grinding applications where cutting discs, grinding discs and flap discs are used.





# RAM20LR & RAM10LR Angle Sanders

Small Angle Sanders

## Features & Benefits

- **Ergonomic design** – improved operator comfort
- **Excellent power/weight ratio** – offer increased productivity
- **Compact head** – allows for easier access
- **Collet design** – facilitates use with a wide range of abrasives
- **Direct attachment** – reduced head height with R type QCD
- **20,000rpm and 12,000rpm options** – use with a range of consumables
- **Moulded sleeve** – fitted for operator comfort

## Tool Specification

- Speed: 20,000 or 12,000rpm
- Power: 300W
- Weight: 0.59kg
- Throttle: Lever
- Exhaust: Rear



## Industries

- Aerospace
- Automotive
- Fabrication

## Applications

- Blending
- Blade Finishing
- General finishing and polishing



**ata**

Future Focus  
Precision Engineering



# RAM16L Angle Sander

Durable, Powerful Angle Sander

## Features & Benefits

- **Compact design** – ideal for light sanding applications
- **Excellent power to weight ratio** – offer increased productivity
- **Range of collet options** – suitable for numerous consumables
- **Moulded sleeve** – fitted for operator comfort

## Tool Specification

- Speed: 16,000rpm
- Power: 370W
- Weight: 1.3kg
- Throttle: Lever
- Collet: 6mm



## Industries

- Foundry
- Ship building
- Automotive
- Aerospace
- Mold & Die
- Fabrication

## Applications

A wide range of deburring and finishing applications with carbide burs, quick change discs and mini-flexi discs.



**ata**

Future Focus  
Precision Engineering



# RAMX13LR Extended Right Angle Sander

Extended Right Angle Sander

## Features & Benefits

- **Motor design** – increased power
- **Moulded body design** – improved aesthetics, ergonomics and insulation
- **Lever design** – improved operator comfort
- **Extended body** – offers operator improved control
- **Durable gear design** – offers increased service life
- **Direct disc attachment option** – reducing head height and vibration

## Tool Specification

- Speed: 13,000rpm
- Power: 820W
- Weight: 1.17kg
- Collet: 6mm
- Throttle: Lever

## Industries

- Automotive
- Aerospace
- Oil and Gas
- Fabrication
- Defence

## Applications

Ideal for use with Quick Change Discs for blending and finishing.





# RA5 Angle Sander

Low Speed Angle Sander

## Features & Benefits

- **Ergonomic design** – improved operator comfort
- **Excellent power to weight ratio** – offers increased productivity
- **Low speed** – suitable for many sanding applications
- **Side handle** – provides greater operator control
- **Ergo sleeve** – fitted for operator comfort
- **Suited to 180mm fibre discs** – ideal for sanding applications

## Tool Specification

- Speed: 5,500rpm
- Power: 820W
- Weight: 2.75kg
- Throttle: Lever

## Industries

- Automotive
- Fabrication

## Applications

Blending, general finishing and polishing.





# BLM16L Belt Sander

Durable, Powerful Belt Sander

## Features & Benefits

- **Compact design** – ideal for sanding applications
- **Multiple arm attachments available\*** – to suit a range of belt sizes
- **Quick and easy belt change** – to reduce downtime and maximise productivity
- **Adjustable swivel head** – allows for access to nearly any application
- **Moulded sleeve** – fitted for operator comfort

## Tool Specification

- Speed: 5,500rpm
- Power: 820W
- Weight: 2.75kg
- Throttle: Lever

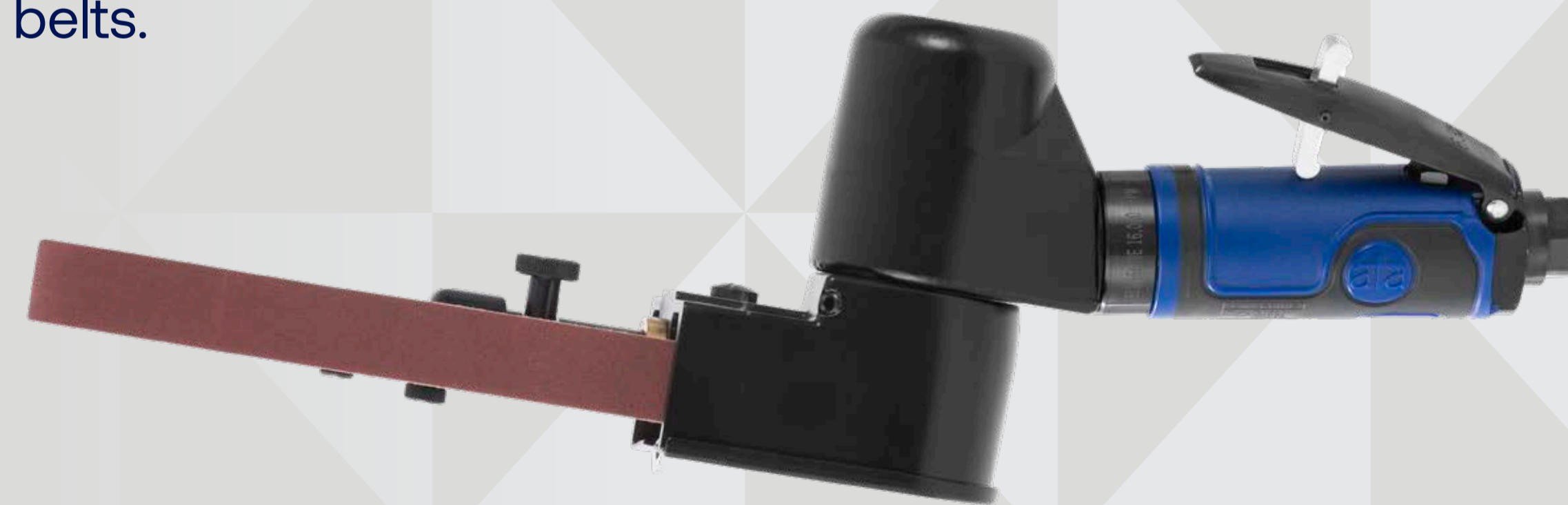
## Industries

- Foundry
- Ship building
- Automotive
- Aerospace
- Mold & Die
- Fabrication

## Applications

A wide range of deburring and finishing applications with use of abrasive belts.

**\*Standard arm suits  
20mm x 480mm belts**





# RALM20LR Belt Sander

20,000rpm Belt Sander

## Features & Benefits

- **Excellent power to weight ratio** – increased productivity
- **Safety guard** – ensures user protection
- **Tracking system** – for precise belt alignment
- **Moulded sleeve** – fitted for operator comfort
- **Quick belt change** – results in increased productivity
- **One handed operation** – suitable for light deburring and finishing
- **Compact design** – suitable for light to medium duty applications
- **Multiple contact arms available\*** – facilitates a wide range of belt sizes

## Tool Specification

- Speed: 20,000rpm
- Power: 300W
- Weight: 0.79kg
- Throttle: Lever
- Exhaust: Rear



## Industries

- Foundry
- Automotive
- Aerospace
- Mold & Die

## Applications

A compact tool designed for light deburring and sanding applications.

**\*Standard arm suits  
13mm x 305mm belts**



**ata**

Future Focus  
Precision Engineering