

Indexable Milling Tools

ABPF | Ball High Precision Finish - Carbide Shank

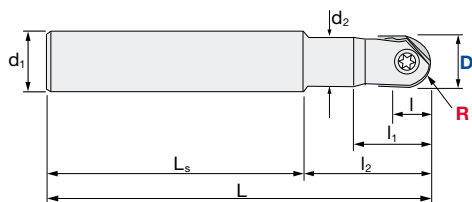
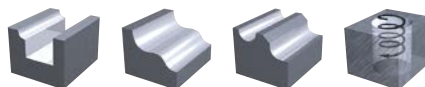
V max
High Speed

▽▽
Semi Finishing

▽▽▽
Finishing

HRC
65

No. of Teeth
2



R	± 0.005
Set-up	± 0.010

ABPF-W Ball High Precision Finish - Carbide Shank Regular

ID Code	Item Code	Stock	Flutes	D	R	L	l	l ₁	l ₂	L _s	d ₁	d ₂	Inserts
FH393	ABPF-08S08W	■	2	8	4	100	4.4	18	30	70	8	7.8	Z...FG-080...
FH394	ABPF-10S10W			10	5		5.5	23	35	65	10	9.8	Z...FG-100...
FH395	ABPF-12S12W			12	6		6.6	26	45	65	12	11.8	Z...FG-120...
FH478	ABPF-16S16W			16	8		8.8	19	35	105	16	15.5	Z...FG-160...
FH479	ABPF-20S20W			20	10		11	22	40	120	20	19.5	Z...FG-200...
FH480	ABPF-25S25W			25	12.5		13.7	25	45	135	25	24.5	Z...FG-250...



ABPF-WL Ball High Precision Finish - Carbide Shank Long Neck

ID Code	Item Code	Stock	Flutes	D	R	L	l	l ₁	l ₂	L _s	d ₁	d ₂	Inserts
FH396	ABPF-08S08WL	■	2	8	4	130	4.4	18	65	65	8	7.8	Z...FG-080...
FH397	ABPF-10S10WL			10	5	140	5.5	23	75		10	9.8	Z...FG-100...
FH398	ABPF-12S12WL			12	6	150	6.6	26	85		12	11.8	Z...FG-120...



ABPF-WE Ball High Precision Finish - Carbide Shank Extra Long

ID Code	Item Code	Stock	Flutes	D	R	L	l	l ₁	l ₂	L _s	d ₁	d ₂	Inserts
FH458	ABPF-16S16WE	■	2	16	8	200	8.8	19	120	80	16	15.8	Z...FG-160...
FH459	ABPF-20S20WE			20	10	250	11	22	150	100	20	19.8	Z...FG-200...
FH460	ABPF-25S25WE			25	12.5	300	13.7	25	190	110	25	24.8	Z...FG-250...

■ = Stock | Germany



Inserts p. 7

Indexable Milling Tools | Grades Overview

INSERTS | Ball High Precision Finish

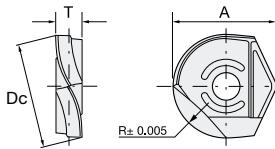


Fig. 1: ZPFG

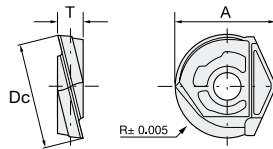


Fig. 2: ZDFG

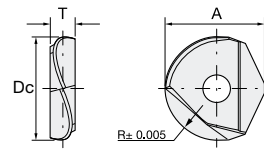
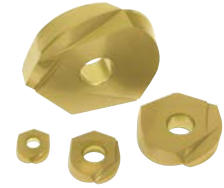


Fig. 3: ZDFG-SF



Item Code	Size				Grade					Shape			
	Dc	R	A	T	PCA12M	ATH10E	PCA08M	PTH08M	ACS05E		ATH80D		
ZPFG-080	8	4	9.7	2.1	WF547		WF594	WF645					
ZPFG-080-GH												WF266	WF267
ZPFG-080-GF													
ZPFG-100	10	5	12.1	2.7	WF548		WF595	WF646					
ZPFG-100-GH												WF268	WF269
ZPFG-100-GF													
ZPFG-120	12	6	14.6	3.2	WF549		WF596	WF647					
ZPFG-120-GH												WF270	WF271
ZPFG-120-GF													
ZPFG-160	16	8	16.6	4.2	WF598		WF597	WF648					
ZPFG-160-GH												WF272	WF273
ZPFG-160-GF													
ZPFG-200	20	10	20.3	5.2	WF600		WF599	WF649					
ZPFG-200-GH												WF274	WF275
ZPFG-200-GF													
ZPFG-250	25	12.5	24.1	6.2	WF602		WF601	WF650					
ZPFG-250-GH												WF276	WF277
ZPFG-250-GF													
ZPFG-320	32	16	30	7.2	WF604		WF603	WF651					
ZPFG-320-GH												WF278	WF279
ZPFG-320-GF													
ZDFG-080-WH	8	4	9.7	2.1						WF281			
ZDFG-080-WF												WF280	
ZDFG-100-WH					10	5	12.1	2.7					WF282
ZDFG-100-WF												WF284	
ZDFG-120-WH	12	6	14.6	3.2									WF285
ZDFG-120-WF												WF164	
ZDFG-160-WH					16	8	16.6	4.2					WF168
ZDFG-160-WF												WF169	
ZDFG-200-WH	20	10	20.3	5.2									WF170
ZDFG-200-WF												WF171	WF167
ZDFG-250-WH					25	12.5	24.1	6.2					
ZDFG-250-WF													
ZDFG-320-WH	32	16	30	7.2									
ZDFG-320-WF													
ZDFG-160-SF					16	8	16.6	4.2		WF263			
ZDFG-200-SF	20	10	20.3	5.2		WF264							
ZDFG-250-SF	25	12.5	24.1	6.2		WF265							

