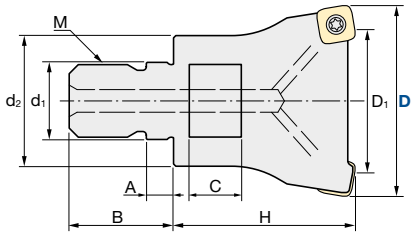
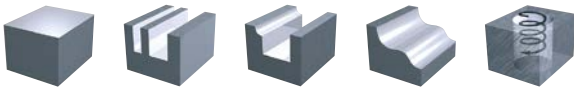


**Indexable Milling Tools**

**ASRFM | Turbo4 - Mini | Modular Type**

<b>Q max</b> High Efficient	<b>Jet</b> Air Hole	<b>▽</b> Roughing	<b>▽▽</b> Semi-Finishing	<b>HRC</b> 60	<b>No. of Teeth</b> 2 – 5
--------------------------------	------------------------	----------------------	-----------------------------	------------------	------------------------------



<b>Programming radius</b>	<b>2.0 mm</b>
Tolerance	D -0.1 ~ -0.2mm
Torque on screw	2.0 Nm
a <sub>p</sub> max	1.2 mm

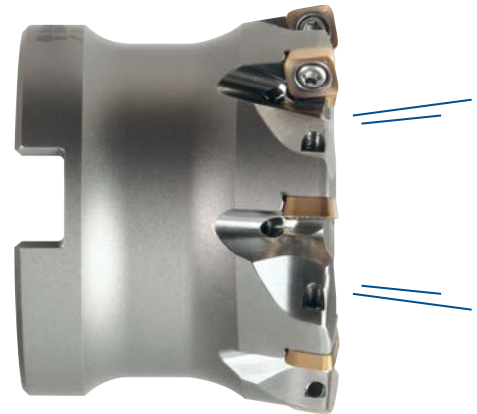
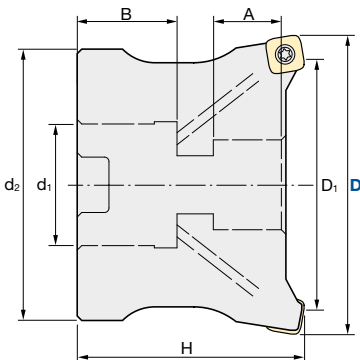
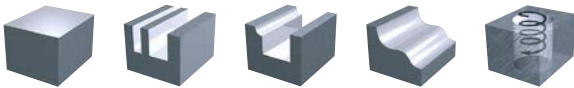
Modular Type												
ID Code	Item Code	Flutes	D	H	D <sub>1</sub>	d <sub>1</sub>	M	d <sub>2</sub>	A	B	Wrench	Inserts
FH552	<b>ASRFM-3020R-2-M10</b>	2	<b>20</b>	30	8	10.5	M10	17.8	5.5	19	15	SPNW07T2TR SPMT07T2TR SPMT07T2ER-LF
FH553	<b>ASRFM-3025R-3-M12</b>	3	<b>25</b>	35	13	12.5	M12	20.8	5.5	22	17	
FH554	<b>ASRFM-3032R-4-M16</b>	4	<b>32</b>	40	20	17	M16	28.8	6	23	22	
FH555	<b>ASRFM-3035R-4-M16</b>	4	<b>35</b>	40	23	17	M16	28.8	6	23	22	
FH556	<b>ASRFM-3040R-5-M16</b>	5	<b>40</b>	40	28	17	M16	28.8	6	23	22	
FH557	<b>ASRFM-3042R-5-M16</b>	5	<b>42</b>	40	30	17	M16	28.8	6	23	22	

↑ Wrench Size

**ASC | Carbide Shanks for Modular Mills & AS | Steel Shanks for Modular Mills: page 8**

**ASRFB | Turbo4 - Mini | Bore Type**

<b>Q max</b> High Efficient	<b>Jet</b> Air Hole	<b>▽</b> Roughing	<b>▽▽</b> Semi-Finishing	<b>HRC</b> 60	<b>No. of Teeth</b> 5 – 8
--------------------------------	------------------------	----------------------	-----------------------------	------------------	------------------------------



<b>Programming radius</b>	<b>2.0 mm</b>
Tolerance	D -0.1 ~ -0.2mm
Torque on screw	2.0 Nm
a <sub>p</sub> max	1.2 mm

Bore Type										
ID Code	Item Code	Z	D	H	D <sub>1</sub>	d <sub>1</sub>	d <sub>2</sub>	A	B	Inserts
FH558	<b>ASRFB-3040RM-5-16</b>	5	<b>40</b>	39.5	28	16	35	10.54	19	SPNW07T2TR SPMT07T2TR SPMT07T2ER-LF
FH559	<b>ASRFB-3042RM-5-16</b>	5	<b>42</b>	39.5	30	16	35	10	19	
FH560	<b>ASRFB-3050RM-7-22</b>	7	<b>50</b>	49.5	38	22	40	17	20	
FH561	<b>ASRFB-3052RM-7-22</b>	7	<b>52</b>	49.5	40	22	40	17	20	
FH562	<b>ASRFB-3063RM-8-27</b>	8	<b>63</b>	49.5	51	27	60	16	22	
FH563	<b>ASRFB-3066RM-8-27</b>	8	<b>66</b>	49.5	54	27	60	16	22	

**Indexable Milling Tools**

**INSERTS ASRF | Turbo4 - Mini**

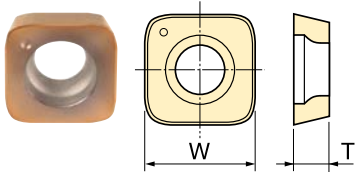


Fig.1 Standard type

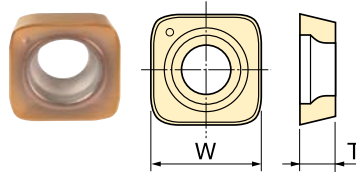


Fig.2 Low-resistance breaker type

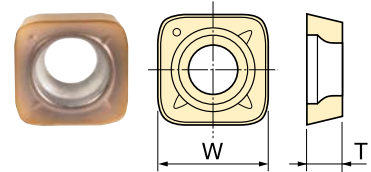
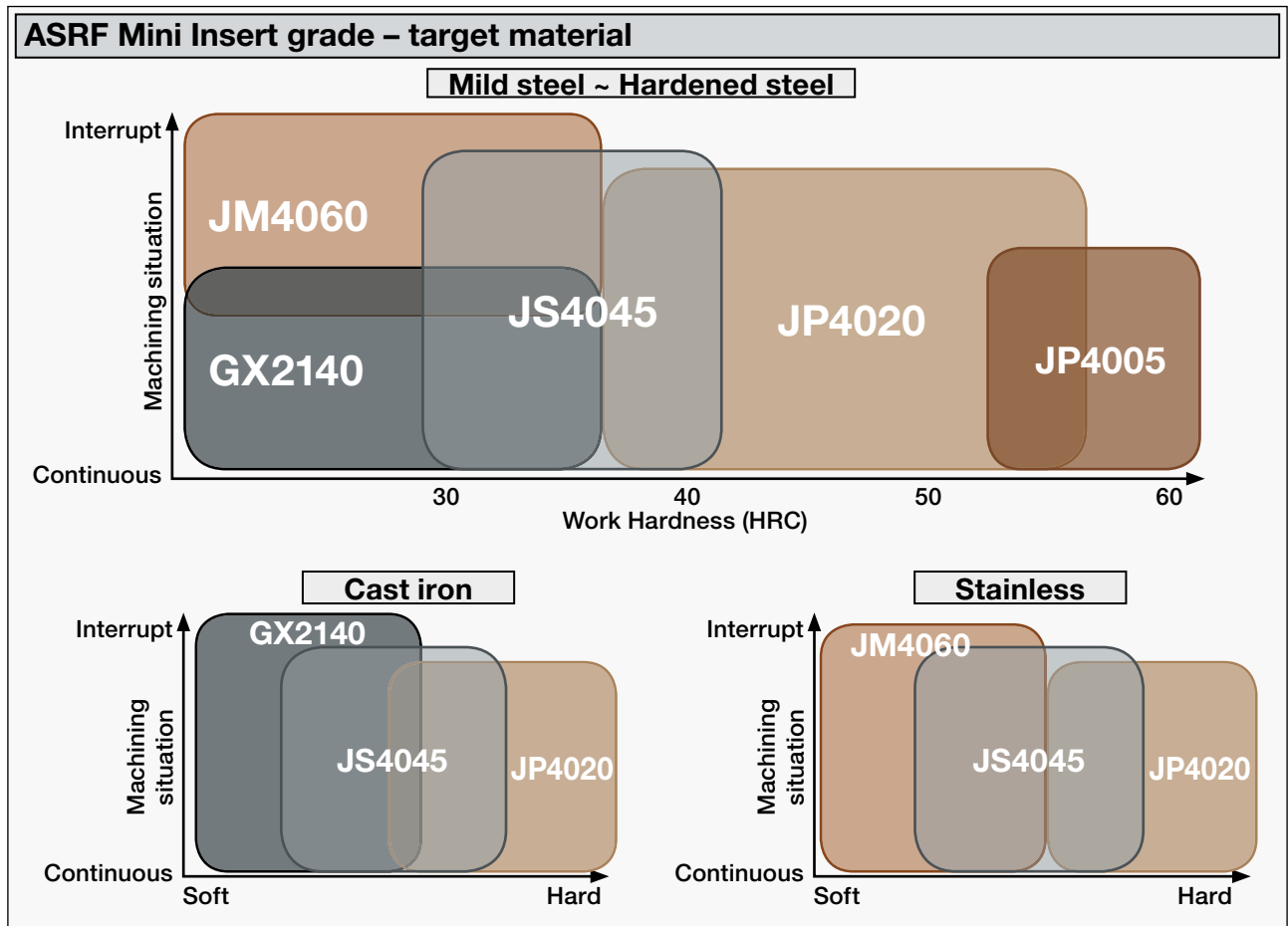


Fig.3 Low-Force type

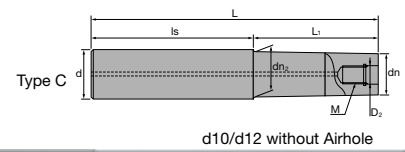
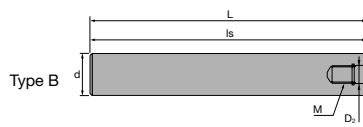
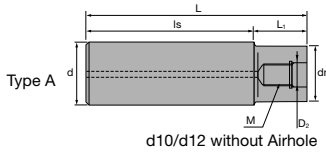
Inserts	Tolerance Class	Grade					Size (mm)			Shape
		GX2140	JM4060	JS4045	JP4020	JP4005	CAM R	W	T	
Item code		ID-Code								
SPNW07T2TR	M	WF716	WF717	WF715	WF714	WF713	2	7.94	2.78	Fig.1
SPMT07T2TR			WF720	WF719	WF718					Fig.2
SPMT07T2ER-LF			WF721							Fig.3

GX2140	CVD · For heavy roughing of mild steels   Recommended for dry cutting
JM4060	PVD · For stainless steels
JS4045	PVD · General grade for 30–40HRC   Recommended for dry cutting
JP4020	PVD · For pre-hardened steels 40–55HRC
JP4005	PVD · For hardened steels > 50HRC



Clamp Screw		Wrench	
ID-Code	Item-Code	ID-Code	Item-Code
ET176	265-143	ET011	104-T10

# MMC Hitachi Tool



## ASC | Carbide Shanks for Modular Mills



Carbide Shank		D <sub>2</sub>	M	L	L <sub>1</sub>	Is	dn	dn <sub>2</sub>	d	Type					
Without Airhole	FH137	ASC10-6.5-74-24	6.5	M6	74	24	50	9.3	-	10	A				
	FH254	ASC10-6.5-84-34			84	34									
	FH255	ASC10-6.5-114-24			114	24									
	FH138	ASC10-6.5-114-49				49	65								
	FH139	ASC12-6.5-74-24			74	24	50					11	11.5	12	C
	FH256	ASC12-6.5-94-44			94	44									
	FH257	ASC12-6.5-129-24			129	24									
	FH140	ASC12-6.5-129-64				64	65								
With Airhole	FH141	ASC16-8.5-95-30	8.5	M8	95	30	65	14.5	15.5	16	C				
	FH258	ASC16-8.5-120-55			120	55									
	FH142	ASC16-8.5-140-75			140	75									
	FH260	ASC16-8.5-160-30			160	30									
	FH259	ASC16-8.5-160-95		95	65										
	FH143	ASC20-10.5-120-50	10.5	M10	120	50	70	18	-	20	A				
	FH261	ASC20-10.5-170-90Z			170	90	80	18.5	19.5		C				
	FH144	ASC20-10.5-220-50			220	50	170	18	-		A				
	FH262	ASC20-10.5-220-120Z				120	100	18.5	19.5		20	C			
	FH263	ASC20-10.5-270-150Z			270	150	120								
	FH264	ASC20-10.5-270-50Z		50	220										
	FH145	ASC25-12.5-145-65	12.5	M12	145	65	80	23	-	25	A				
	FH146	ASC25-12.5-265-65			265	200									
	FH265	ASC25-12.5-215-115			215	115	100								
	FH266	ASC25-12.5-265-145			265	145	120								
	FH268	ASC25-12.5-315-65				65	250								
	FH267	ASC25-12.5-315-195			315	195	120								
	FH147	ASC32-17-160-80	17	M16	160	80	80	28	-	32	A				
	FH269	ASC32-17-260-140			260	140	120								
	FH148	ASC32-17-310-80			310	80	230								
FH270	ASC32-17-360-240	360			240	120									

- 🇬🇧 SUPER Lock milling chucks or shrink-fit holders can be used.
- 🇩🇪 SUPER Lock Aufnahmen oder Schrumpffutter können verwendet werden.
- 🇮🇹 Possono essere utilizzati mandrini a forte serraggio SUPER Lock.

- 🇪🇸 Aptos para amarrar en portapinzas SUPER Lock.
- 🇫🇷 Les attachements SUPER Lock peuvent être utilisés.
- 🇵🇹 Cones hidráulicos de grande aperto e aperto térmico podem ser usados.

## AS | Steel Shanks for Modular Mills



Steel Shank		D <sub>2</sub>	M	L	L <sub>1</sub>	Is	dn	dn <sub>2</sub>	d	Type	
Without Airhole	FH131	AS10-6.5-74-0	6.5	M6	74	-	74	-	10	B	
	FH132	AS12-6.5-84-4			84	4	80	11	-	12	A
With Airhole	FH133	AS16-8.5-95-15	8.5	M8	95	15	80	14.5	15.5	16	C
	FH134	AS20-10.5-100-20	10.5	M10	100	20		18	-	20	A
	FH271	AS25-12.5-115-35	12.5	M12	115	35		23	23	25	
	FH272	AS32-17-110-30	17	M16	110	30		28	28	32	

- 🇬🇧 SUPER Lock milling chucks can be used.
- 🇩🇪 SUPER Lock Aufnahmen können verwendet werden.
- 🇮🇹 Possono essere utilizzati mandrini a forte serraggio SUPER Lock.

- 🇪🇸 Aptos para amarrar en portapinzas SUPER Lock.
- 🇫🇷 Les attachements SUPER Lock peuvent être utilisés.
- 🇵🇹 Cones hidráulicos de grande aperto e aperto térmico podem ser usados.

🇬🇧 For further information about modular chucks please see our brochure *Indexable Modular Series No. 328.2*

🇩🇪 Weitere Informationen über modulare Werkzeugaufnahmen finden Sie in unserem Prospekt: *Indexable Modular Series No. 328.2*

🇪🇸 Para obtener más información sobre conos modulares consulte nuestro folleto *Indexable Modular Series No. 328.2*

🇮🇹 Per maggiori informazioni riguardanti la gamma dei mandrini avvitali consultate il catalogo *Indexable Modular Series No. 328.2*

🇫🇷 Pour de plus amples informations concernant les attachements modulaires, voyez SVP notre brochure *Indexable Modular Series No. 328.2*

🇵🇹 Para mais informações sobre Cones Modulares consulte o nosso folheto *Indexable Modular Series No. 328.2*



Always up to date: Please check our P50 QuickFinder

**P50 PRODUCTIONS50® QuickFinder** [www.mmc-hitachitool-eu.com/quickfinder](http://www.mmc-hitachitool-eu.com/quickfinder)

MMC Hitachi Tool Engineering Europe GmbH

Itterpark 12 · 40724 Hilden · Phone +49 (0) 21 03-24 82-0 · Fax +49 (0) 21 03-24 82-30  
 E-Mail [info@mmc-hitachitool-eu.com](mailto:info@mmc-hitachitool-eu.com) · Internet [www.mmc-hitachitool-eu.com](http://www.mmc-hitachitool-eu.com)  
 © 2015 by MMC Hitachi Tool Engineering Europe GmbH · Printed in Germany