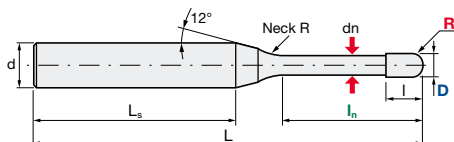
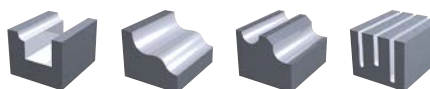


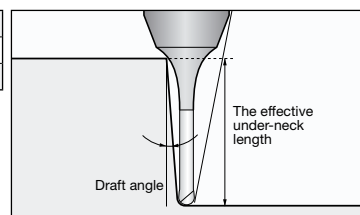
HD – High Adhesion Diamond Coated Solid Carbide End Mill

D-EPDB | Epoch HD Coated Deep Ball End Mill

HD Diamond Coating	V max High Speed	Roughing	Finishing	No. of Teeth 2
------------------------------	----------------------------	----------	-----------	--------------------------



Helix angle	30°
R accuracy	+/- 0.005 mm
Shank tolerance	h5

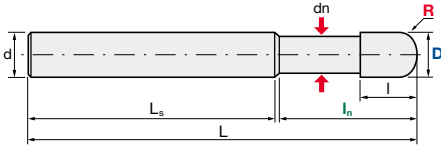


ID Code	Item Code	Z	Size									Effective Underneck Using Length by Draft Angle				
			D	R	In	I	dn	Ls	NeckR	L	d	0.5°	1°	1.5°	2°	3°
DC077	D-EPDB-2001-0.2	2	0.1	0.05	0.2	0.15	0.08	35.63	1	45	0.35	0.37	0.39	0.41	0.44	
DC078	D-EPDB-2001-0.5				0.5						0.67	0.70	0.73	0.76	0.81	
DC079	D-EPDB-2002-0.5				1						0.70	0.72	0.75	0.77	0.82	
DC080	D-EPDB-2002-1		0.2	0.1	1	0.3	0.17	40.06		1.22	1.26	1.30	1.33	1.39		
DC081	D-EPDB-2002-1.5				1.5					1.74	1.79	1.84	1.88	2.05		
DC082	D-EPDB-2003-1				2					1.31	1.38	1.43	1.49	1.59		
DC083	D-EPDB-2003-2		0.3	0.15	2	0.45	0.27	39.30		2.36	2.46	2.55	2.62	2.76		
DC084	D-EPDB-2003-3				3					3.41	3.53	3.64	3.73	4.02		
DC085	D-EPDB-2004-1				1					1.31	1.37	1.43	1.48	1.58		
DC086	D-EPDB-2004-2		0.4	0.2	2	0.6	0.37	39.53		2.36	2.46	2.54	2.62	2.75		
DC087	D-EPDB-2004-4				4					4.45	4.59	4.71	4.83	5.33		
DC088	D-EPDB-2004-6				6					6.52	6.70	6.89	7.22	7.99		
DC089	D-EPDB-2005-1		0.5	0.25	1	0.75	0.47	40.77		1.31	1.37	1.42	1.47	1.57		
DC090	D-EPDB-2005-2				2					2.36	2.45	2.54	2.61	2.75		
DC091	D-EPDB-2005-4				4					4.45	4.59	4.71	4.82	5.32		
DC092	D-EPDB-2005-6				6					6.52	6.70	6.88	7.21	7.97		
DC093	D-EPDB-2005-8	8			8.58				8.79	9.16	9.60	10.63				
DC094	D-EPDB-2005-10	10			10.64				10.94	11.45	12.00	13.28				
DC095	D-EPDB-2006-2	0.6	0.3	2	0.9	0.57	40.00	2.52	2.66	2.79	2.91	3.13				
DC096	D-EPDB-2006-4			4				4.64	4.86	5.04	5.20	5.48				
DC097	D-EPDB-2006-6			6				6.75	7.02	7.23	7.42	7.96				
DC098	D-EPDB-2006-10			10				10.92	11.26	11.54	11.99	13.27				
DC099	D-EPDB-2008-2	0.8	0.4	2	1.2	0.77	40.47	2.51	2.65	2.78	2.89	3.11				
DC100	D-EPDB-2008-4			4				4.64	4.85	5.03	5.19	5.47				
DC101	D-EPDB-2008-6			6				6.74	7.01	7.23	7.41	7.92				
DC102	D-EPDB-2008-8			8				8.83	9.14	9.39	9.60	10.58				
DC103	D-EPDB-2008-12			12				12.99	13.36	13.71	14.36	15.89				
DC104	D-EPDB-2008-16	16	17.12	17.55	18.27	19.15	21.20									
DC001	D-EPDB-2010-5	1	0.5	5	1.5	0.95	47.94	5.74	5.97	6.16	6.33	6.63				
DC002	D-EPDB-2010-10			10				10.95	11.28	11.55	12.01	13.26				
DC123	D-EPDB-2010-15			15				16.39	16.90	17.31	17.99	19.90				
DC003	D-EPDB-2010-20			20				21.56	22.16	22.87	23.97	26.54				
DC124	D-EPDB-2010-25			25				26.72	27.38	28.57	29.95	-				
DC004	D-EPDB-2010-30			30				31.86	32.76	34.27	35.94	-				

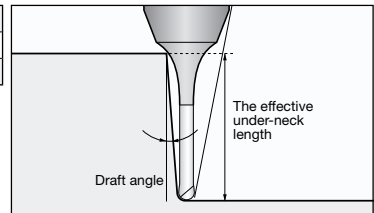
- = no contact

HD – High Adhesion Diamond Coated Solid Carbide End Mill

D-EPDB | Epoch HD Coated Deep Ball End Mill



Helix angle	30°
R accuracy	+/- 0.005 mm
Shank tolerance	h5



ID Code	Item Code	Z	Size									Effective Underneck Using Length by Draft Angle				
			D	R	In	l	dn	Ls	NeckR	L	d	0.5°	1°	1.5°	2°	3°
DC125	D-EPDB-2015-5	2	1.5	0.75	5	2.25	1.4	49.12	4	60	60	5.86	6.05	6.22	6.38	6.70
DC126	D-EPDB-2015-10				10			44.12				11.04	11.35	11.60	12.10	13.34
DC005	D-EPDB-2015-15				15			39.12				16.20	16.58	17.27	18.08	19.98
DC127	D-EPDB-2015-20				20			34.12				21.65	22.21	22.97	24.06	-
DC006	D-EPDB-2015-30				30			44.12				31.93	32.87	34.37	36.03	-
DC128	D-EPDB-2020-5		2	1	5	3	1.9	50.30	4	60	60	5.85	6.04	6.20	6.35	6.62
DC007	D-EPDB-2020-10				10			45.30				11.04	11.33	11.58	12.05	13.26
DC129	D-EPDB-2020-15				15			40.30				16.19	16.57	17.23	18.03	19.90
DC008	D-EPDB-2020-20				20			35.30				21.32	21.95	22.93	24.02	-
DC009	D-EPDB-2020-30				30			45.30				31.93	32.85	34.34	-	-
DC010	D-EPDB-2020-40		40	35.30	42.17	43.74	-	-	-							
DC130	D-EPDB-2030-10		3	1.5	10	4.5	2.9	42.94	4	60	60	11.02	11.31	11.55	11.95	13.10
DC131	D-EPDB-2030-20				20			32.94				21.31	21.91	22.87	23.92	26.37
DC011	D-EPDB-2030-30				30			42.94				31.54	32.80	34.27	35.88	-
DC132	D-EPDB-2030-40				40			32.94				42.16	43.70	45.68	-	-
DC012	D-EPDB-2030-60				60			32.94				62.75	65.49	-	-	-
DC133	D-EPDB-2040-10		4	2	10	8	3.8	45.30	4	60	60	11.18	11.43	11.66	12.14	13.25
DC134	D-EPDB-2040-20				20			35.30				21.44	22.12	23.06	24.10	-
DC135	D-EPDB-2040-30				30			45.30				31.68	33.01	34.47	-	-
DC013	D-EPDB-2040-40				40			35.30				42.11	43.91	-	-	-
DC014	D-EPDB-2040-80	80			45.30			83.83				-	-	-	-	
DC015	D-EPDB-2060-20	6	3	20	12	5.7	100.00	-	120	120	-	-	-	-	-	
DC136	D-EPDB-2060-40			40			80.00				-	-	-	-		
DC016	D-EPDB-2060-60			60			60.00				-	-	-	-		
DC017	D-EPDB-2080-25	8	4	25	16	7.6	115.00	-	140	8	-	-	-	-	-	
DC018	D-EPDB-2080-80			80			60.00				-	-	-	-		
DC019	D-EPDB-2100-30			30			120.00				-	-	-	-		
DC020	D-EPDB-2100-100	100	50.00	-	-	-	-									

- = no contact