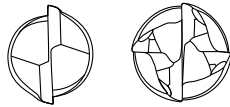
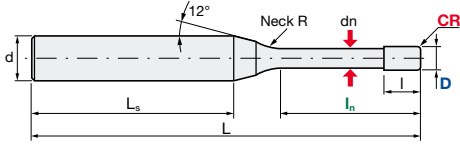
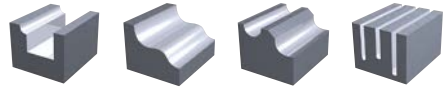


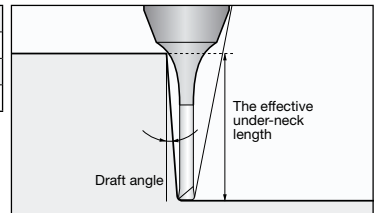
HD – High Adhesion Diamond Coated Solid Carbide End Mill

D-EPDR | Epoch HD Coated Deep Radius End Mill

HD Diamond Coating	V max High Speed			No. of Teeth 2	No. of Teeth 4
------------------------------	----------------------------	---	---	--------------------------	--------------------------



Helix angle	30°
CR	+/- 0.005 mm
Shank tolerance	h5
D	(0/-0.01 mm)

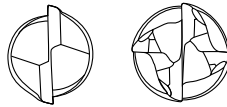
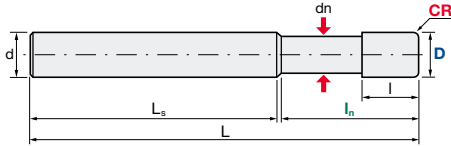


ID Code	Item Code	Z	Size									Effective Underneck Using Length by Draft Angle								
			D	CR	In	I	dn	Ls	NeckR	L	d	0.5°	1°	1.5°	2°	3°				
DC049	D-EPDR-2001-0.2-001	2	0.1	0.01	0.2	0.15	0.08	35.63	1	45	4	0.36	0.38	0.40	0.41	0.45				
DC050	D-EPDR-2001-0.5-001				0.5							0.67	0.70	0.73	0.76	0.81				
DC051	D-EPDR-2002-0.5-002				0.2							1	0.3	0.17	40.06	0.70	0.73	0.75	0.78	0.83
DC052	D-EPDR-2002-1-002											1.5				1.22	1.26	1.30	1.34	1.41
DC053	D-EPDR-2002-1.5-002		0.3	0.02	1	0.45	0.27	40.30	2	50		1.74	1.80	1.84	1.89	2.07				
DC054	D-EPDR-2003-1-002				2							1.32	1.39	1.45	1.51	1.62				
DC055	D-EPDR-2003-2-002				3							2.37	2.47	2.56	2.64	2.78				
DC056	D-EPDR-2003-3-002				4							3.42	3.54	3.65	3.74	4.06				
DC057	D-EPDR-2004-1-002		0.4	0.04	1	0.6	0.37	40.53	2	50		1.32	1.39	1.45	1.51	1.62				
DC058	D-EPDR-2004-2-002				2							2.37	2.47	2.56	2.64	2.78				
DC059	D-EPDR-2004-4-002				4							4.46	4.60	4.73	4.86	5.39				
DC060	D-EPDR-2004-6-002				6							6.53	6.71	6.92	7.26	8.05				
DC061	D-EPDR-2005-1-005		0.5	0.05	1	0.75	0.47	40.77	2	50		1.32	1.39	1.45	1.50	1.61				
DC062	D-EPDR-2005-2-005				2							2.37	2.47	2.56	2.64	2.77				
DC063	D-EPDR-2005-4-005				4							4.45	4.60	4.72	4.86	5.38				
DC064	D-EPDR-2005-6-005				6							6.53	6.71	6.91	7.25	8.04				
DC065	D-EPDR-2005-8-005		0.6	0.06	8	0.9	0.57	33.77	4	55		8.59	8.80	9.19	9.64	10.69				
DC066	D-EPDR-2005-10-005				10							10.64	10.96	11.47	12.04	13.35				
DC067	D-EPDR-2006-2-005				2							2.54	2.69	2.83	2.95	3.18				
DC068	D-EPDR-2006-4-005				4							4.66	4.88	5.07	5.23	5.52				
DC069	D-EPDR-2006-6-005	0.8	0.08	6	1.2	0.77	36.00	4	60	6.76	7.03	7.26	7.45	8.04						
DC070	D-EPDR-2006-10-005			10						10.93	11.28	11.55	12.04	13.35						
DC071	D-EPDR-2008-2-005			2						2.54	2.69	2.83	2.95	3.18						
DC072	D-EPDR-2008-4-005			4						4.66	4.88	5.07	5.23	5.52						
DC073	D-EPDR-2008-6-005	1	0.1	6	1.5	0.95	36.47	4	60	6.76	7.03	7.26	7.45	8.04						
DC074	D-EPDR-2008-8-005			8						8.85	9.16	9.41	9.64	10.69						
DC075	D-EPDR-2008-12-005			12						13.00	13.38	13.75	14.43	16.00						
DC076	D-EPDR-2008-16-005			16						17.13	17.56	18.32	19.22	21.31						
DC105	D-EPDR-2010-5-01	2	0.1	5	1.5	0.95	47.94	6	60	5.76	6.00	6.20	6.37	6.76						
DC024	D-EPDR-2010-5-02			20						21.57	22.17	22.91	24.03	26.63						
DC106	D-EPDR-2010-10-01			10						10.79	11.31	11.58	12.08	13.39						
DC021	D-EPDR-2010-10-02			10						10.96	11.30	11.57	12.06	13.36						
DC107	D-EPDR-2010-15-01			15			16.40	16.92	17.34	18.07	20.03									
DC108	D-EPDR-2010-15-02			15			16.40	16.92	17.33	18.05	20.00									
DC109	D-EPDR-2010-20-01			20			21.58	22.18	22.93	24.05	26.66									
DC022	D-EPDR-2010-20-02			20			21.57	22.17	22.91	24.03	26.63									
DC023	D-EPDR-2010-30-02			30			31.87	32.79	34.32	35.99	-									

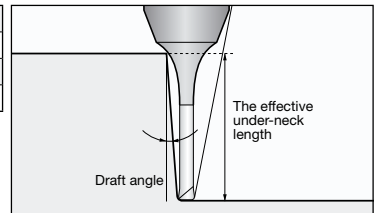
- = no contact

HD – High Adhesion Diamond Coated Solid Carbide End Mill

D-EPDR | Epoch HD Coated Deep Radius End Mill



Helix angle	30°
CR	+/- 0.005 mm
Shank tolerance	h5
D	(0/-0.01 mm)



Size												Effective Underneck Using Length by Draft Angle												
ID Code	Item Code	Z	D	CR	In	I	dn	Ls	NeckR	L	d	0.5°	1°	1.5°	2°	3°								
DC110	D-EPDR-2015-5-02	2	1.5	0.2	5	2.25	1.4	49.12	4	60	4	5.88	6.09	6.27	6.43	6.88								
DC111	D-EPDR-2015-10-02				10			44.12				11.06	11.37	11.64	12.20	13.52								
DC025	D-EPDR-2015-15-02				15			39.12				16.21	16.60	17.34	18.19	20.15								
DC112	D-EPDR-2015-20-02				20			34.12				21.67	22.24	23.05	24.17	-								
DC026	D-EPDR-2015-30-02				30			44.12				31.95	32.92	34.45	-	-								
DC113	D-EPDR-2020-5-02				5			2				0.2	3	1.9	50.30	4	60	4	4	5.88	6.09	6.27	6.43	6.88
DC027	D-EPDR-2020-10-02	10	45.30	11.06	11.37	11.64	12.20		13.52															
DC114	D-EPDR-2020-15-02	15	40.30	16.21	16.60	17.34	18.19		-															
DC028	D-EPDR-2020-20-02	20	35.30	21.34	22.02	23.05	24.17		-															
DC029	D-EPDR-2020-30-02	30	45.30	31.95	32.92	34.45	-		-															
DC030	D-EPDR-2020-40-02	40	35.30	42.19	43.81	-	-		-															
DC115	D-EPDR-2030-10-02	10	3	0.2	4.5	2.9	42.94	4	60	4	4	11.06	11.37	11.64	12.20	13.52								
DC116	D-EPDR-2030-20-02	20					32.94					21.34	22.02	23.05	24.17	26.79								
DC031	D-EPDR-2030-30-02	30					42.94					31.57	32.92	34.45	36.14	-								
DC032	D-EPDR-2030-60-02	60					32.94					62.80	65.60	-	-	-								
DC117	D-EPDR-2040-10-05	10					4					0.5	8	3.8	65.30	4	80	4	6	11.22	11.50	11.87	12.43	13.73
DC118	D-EPDR-2040-20-05	20													55.30					21.47	22.25	23.27	24.39	-
DC119	D-EPDR-2040-30-05	30	45.30	31.75	33.15	34.68		-	-															
DC033	D-EPDR-2040-40-05	40	35.30	42.18	44.04	-		-	-															
DC034	D-EPDR-2040-80-05	80	45.30	83.89	-	-		-	-															
DC120	D-EPDR-2060-20-05	20	6	0.5	12	5.7		60.00	-	80	-				4					-	-	-	-	-
DC121	D-EPDR-2060-40-05	40					40.00	-				-	-	-										
DC122	D-EPDR-2060-60-05	60					60.00	-				-	-	-										
DC035	D-EPDR-4060-20-10	20					100.00	-				-	-	-										
DC036	D-EPDR-4060-60-10	60					60.00	-				-	-	-										
DC037	D-EPDR-4080-25-10	25					115.00	-				-	-	-										
DC038	D-EPDR-4080-80-10	80	60.00	-	-	-	-																	
DC040	D-EPDR-4100-30-10	30	120.00	-	-	-	-																	
DC039	D-EPDR-4100-100-10	100	50.00	-	-	-	-																	

- = no contact