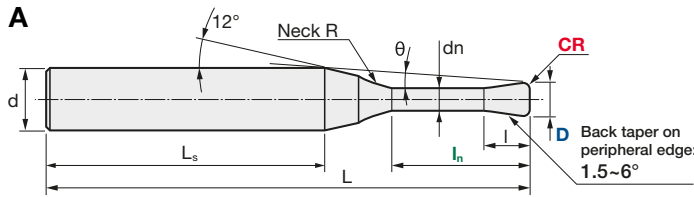
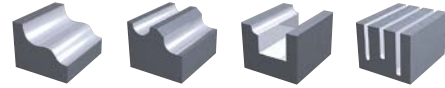


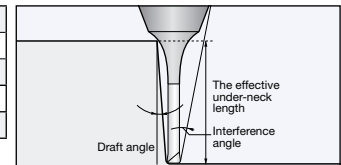
<b>V max</b> High Speed	<b>Q max</b> High Efficient	<b>▽</b> Roughing	<b>▽▽</b> Semi-Finishing	<b>▽▽▽</b> Finishing	<b>HRC</b> 70	<b>No. of Teeth</b> 4
----------------------------	--------------------------------	----------------------	-----------------------------	-------------------------	------------------	--------------------------



※ Back Draft is not available for Diameters 4–6 mm

<b>Carbide</b> Micro Grain	<b>TH45+</b> Nano-PVD Coating	<b>Rake Angle</b> Positive
-------------------------------	----------------------------------	-------------------------------

D	0 / -0.01
CR	± 0.005
d	h5
Helix angle	20°
<b>Backdraft</b>	<b>D 1–3</b>



ID Code	Item Code	Z	Size								Actual Effective Length in Incline Angles															
			D	CR	ln	l	dn	Ls	L	d	Neck R	θ°	0.5°	1°	1.5°	2°	3°									
EP716	EPDRF-4010-4-005-TH	4	1	0.05	4	0.8	0.94	38.81	38.81	50	7.67	4.75	4.95	5.13	5.28	5.56										
EP717	EPDRF-4010-6-005-TH				6							6.84	7.09	7.30	7.49	8.13										
EP718	EPDRF-4010-8-005-TH				8							34.81	5.66	8.92	9.21	9.46	9.73	10.78								
EP719	EPDRF-4010-10-005-TH				10							32.81	5.00	10.99	11.32	11.59	12.12	13.44								
EP720	EPDRF-4010-12-005-TH				12							40.81	4.48	13.06	13.42	13.84	14.51	16.09								
EP721	EPDRF-4010-16-005-TH				16							36.81	3.71	17.18	17.60	18.40	19.30	21.40								
EP722	EPDRF-4010-20-005-TH				20							32.81	3.17	21.29	21.93	22.96	24.09	26.71								
EP723	EPDRF-4010-4-01-TH				1.5							0.1	4	1.35	1.42	38.81	38.81	50	7.70	4.74	4.95	5.12	5.28	5.55		
EP724	EPDRF-4010-6-01-TH												6							36.81	6.54	6.83	7.09	7.30	7.49	8.11
EP725	EPDRF-4010-8-01-TH												8							34.81	5.68	8.91	9.21	9.45	9.72	10.77
EP726	EPDRF-4010-10-01-TH		10	32.81		5.02	10.99	11.32	11.59	12.11	13.42															
EP727	EPDRF-4010-12-01-TH		12	40.81		4.50	13.06	13.42	13.83	14.50	16.08															
EP728	EPDRF-4010-16-01-TH		16	36.81		3.72	17.18	17.60	18.39	19.29	21.39															
EP729	EPDRF-4010-20-01-TH		20	32.81		3.17	21.29	21.93	22.95	24.08	26.70															
EP730	EPDRF-4015-4-01-TH		2	0.05		4	1.7	1.92	39.94	35.94	50		7.15							4.80	4.99	5.16	5.31	5.58		
EP731	EPDRF-4015-8-01-TH					8														35.94	5.12	8.96	9.24	9.48	9.77	10.83
EP732	EPDRF-4015-12-01-TH					12														41.94	3.98	13.09	13.45	13.88	14.56	16.14
EP733	EPDRF-4015-15-01-TH				15	38.94						3.42		16.18	16.58	17.30	18.15	20.12								
EP734	EPDRF-4015-20-01-TH				20	33.94						2.76		21.32	21.98	23.01	24.13	x								
EP735	EPDRF-4020-4-005-TH				2.5	0.1						4		2	2.4	41.11	37.11	50	6.46	4.80	4.99	5.16	5.31	5.59		
EP736	EPDRF-4020-8-005-TH	8										37.11								4.46	8.96	9.25	9.48	9.78	10.85	
EP737	EPDRF-4020-12-005-TH	12										43.11								3.40	13.09	13.45	13.89	14.57	16.16	
EP738	EPDRF-4020-16-005-TH	16										39.11								2.75	17.21	17.63	18.45	19.36	x	
EP739	EPDRF-4020-20-005-TH	20										35.11								2.31	21.32	21.98	23.01	24.14	x	
EP740	EPDRF-4020-4-01-TH	3	0.2	4			2.5	2.86	41.11	37.11	50	6.49	4.80							4.99	5.16	5.31	5.58			
EP741	EPDRF-4020-8-01-TH			8									37.11							4.47	8.96	9.24	9.48	9.77	10.83	
EP742	EPDRF-4020-12-01-TH			12									43.11							3.41	13.09	13.45	13.88	14.56	16.14	
EP743	EPDRF-4020-16-01-TH			16									39.11							2.76	17.21	17.62	18.44	19.35	x	
EP744	EPDRF-4020-20-01-TH			20									35.11							2.31	21.32	21.98	23.01	24.13	x	
EP745	EPDRF-4025-8-01-TH			4	0.05	8							4	3.9	38.24	40.24	50	3.68	9.00	9.27	9.51	9.83	10.89			
EP746	EPDRF-4025-16-01-TH					16													40.24	2.19	17.24	17.67	18.50	19.40	x	
EP747	EPDRF-4025-20-01-TH					20													36.24	1.82	21.35	22.03	23.06	x	x	
EP748	EPDRF-4025-8-02-TH					8													38.24	3.72	8.99	9.27	9.50	9.81	10.86	
EP749	EPDRF-4025-16-02-TH					16													40.24	2.20	17.24	17.67	18.48	19.38	x	
EP750	EPDRF-4025-20-02-TH	20	36.24			1.83	21.34	22.02	23.05	x	x															
EP751	EPDRF-4030-8-02-TH	3	0.2			8	2.5	2.86	44.62	40.62	60	5.65							9.07	9.33	9.55	9.92	10.99			
EP752	EPDRF-4030-12-02-TH					12													40.62	4.48	13.19	13.52	14.03	14.71	16.30	
EP753	EPDRF-4030-16-02-TH					16													36.62	3.71	17.30	17.77	18.59	19.50	21.60	
EP754	EPDRF-4030-20-02-TH					20													42.62	3.16	21.40	22.13	23.15	24.28	26.91	
EP755	EPDRF-4030-25-02-TH			25	37.62	2.67							26.51	27.57	28.86	30.27	x									
EP756	EPDRF-4030-30-02-TH			30	42.62	2.31							31.62	33.02	34.56	36.25	x									
EP757	EPDRF-4040-12-02-TH			4	0.05	12							4	3.9	43.07	35.07	60	3.42	13.12	13.47	13.92	14.60	16.17			
EP758	EPDRF-4040-20-02-TH					20													35.07	2.32	21.34	22.02	23.05	24.17	x	
EP759	EPDRF-4040-30-02-TH					30													45.07	1.65	31.57	32.92	34.45	x	x	
EP760	EPDRF-4040-40-02-TH					40													35.07	1.29	41.94	43.81	x	x	x	

x = no contact